

More Gear Available from TMP Pro Distribution

Bulk Wire Cables

Pre-made cables are great for musicians and portable PA systems, but today's sophisticated installations require hundreds of feet of XLR, speaker, twisted pair, and fiber optic cable. Custom made, site-specific cables are essential to a clean, efficient cable runs. That's why TMP Pro carries a broad variety of bulk wire from brands like Gepco, Monster, Pro-Co, West Penn Wire, Whirlwind, and more.



Gepco Multi-Pair Cable



Gepco Fiber Optic Cable

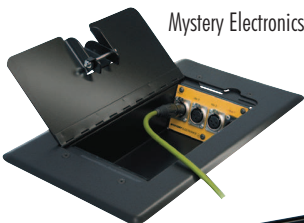


Pro-Co Bulk Wire

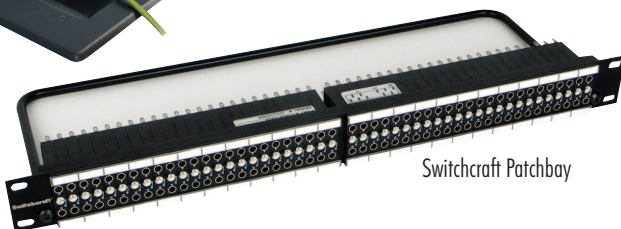


Wall boxes, Floor boxes, Connectors and Patchbays

TMP audio professionals know that a well-designed audio system is made up of much more than mixers, amps, and speakers. Wall boxes, table boxes, stage pockets, connectors, and patchbays are the essential "little things" that can make or break a bid. When you quote a system with TMP Pro, you can be sure that every little thing has been accounted for, and there won't be any little surprises that shrink your margins or delay your schedule.



Mystery Electronics Floor Box



Switchcraft Patchbay

Portable Movie Screens

TMP Pro is proud to offer movie screens from Epic Outdoor Cinema. Epic's screens feature a unique inflatable structure that allows them to be setup anywhere quickly, then taken down and stored with minimal space and effort. Without a bulky rigid frame, very large screens can be erected indoors or out, even in swimming pools!



Epic E-SL 20 Screen
(11'3" x 20' Viewing surface)



Task Lighting

So much pro audio work happens in the dark! No installation is complete without the proper task lighting for mixers, equipment racks, and lighting boards. Littlelite is the source for professional task lighting, and TMP Pro is the source for Littlelite. Over 300 variations are available to meet every A/V need.



Littlelite L-12 LED
Gooseneck lamp w/ Chassis Assembly

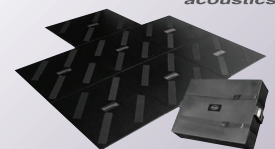


Acoustic Treatment

Gone are the days when drastic electronic equalization was the preferred method of compensating for room modes and acoustics. Proper room treatment with products from companies like Auralex and Primacoustic, plus a little know-how from the experts at TMP Pro, provides far superior results over electronic methods alone. In fact, a properly deployed speaker system, in a properly treated room, will require very little corrective EQ, if any. Whether treating a small home studio or a large performance hall, do not overlook this most important aspect of any installation, and count on TMP Pro to help.



Primacoustic FlexiBooth



Auralex HD64G

SITE SURVEY CHECK LIST

Before you begin designing or quoting a job, you will need some basic information regarding the site and the end-user's needs. Use the Site Survey Check List below to ensure that you collect all the information you will need to complete the design of the system. When you have completed the check list, create a bill of material listing all the components needed for the sound system.

Tools Needed

- Calculator
- Sound pressure meter
- Copy of the floor plan or notepad for area sketches
- Camera
- Measuring wheel/tape measure
- Photocopies of Site Survey Check List
- TMP Pro Distribution Products catalog

I. SYSTEM REQUIREMENTS

A. How Many MIC Inputs Needed? _____

B. How Many AUX Inputs Needed? _____

C. Console Suggestion: _____

D. Is Zone Paging Required?

- Yes No

If yes, how many zones: _____

E. Is Group Paging Required?

- Yes No

F. How Can the Amplifier Be Mounted?

- Rack Wall Shelf

G. Amplifier Features Needed:

- Automatic Level Control (ALC) Wattage
 Bass & Treble Controls Graphic Equalizer
 Automatic Mute Variable Mute
 MOH Output Manual Mute
 Night Ringer Low Voltage or 70V
 Variable Loudness Contour Control

H. Amplifier Wattage: _____

I. Amplifier Suggestion: _____

J. Speaker Features Needed?

- 2-Way 3-Way
 Weatherproof Fly Hardware
 Other: _____

K. Speaker Suggestion: _____

NOTES:

II. SPECIFIC AREA REQUIREMENTS

A. Area Name/Description: _____

Area Notes: _____

B. Area Dimensions:

Length _____ ft. Width _____ ft.

Square Footage _____ sq. ft. Ceiling Height _____ ft.

C. Ambient Noise Level: _____ dB

D. Will There Be Large Changes in Ambient Noise Levels in the Area?

- Yes No

If yes, note range: _____ dB to _____ dB

E. Environment:

- Office/Professional/Retail Store Factory/Industrial
 Institutional/Remote Public Area Warehouse
 Aisles created by high storage racks Hallways
 Cafeteria/Break Room Auditorium
 Loading Docks/Outdoor Areas
 Other: _____

F. Power Requirements:

- 15 Amp 20 Amp
 30 Amp Tie-In Circuit

G. How Can the Speakers Be Mounted?

- Suspended/Drop Ceiling* Wall**
 Beams, Columns, Other Structures

* Make note of any changes in surfaces or positions for actual speaker mounting.

** Make note of any changes in wall angles, surfaces, or height.

H. Are Volume Controls Mounted on Each Speaker Needed?

- Yes No

I. Are Wall-Mounted Attenuators Needed for Area's Volume Control?

- Yes No

J. Is Digital Signal Processing (DSP) Needed? Yes No

K. Is Background Music Needed? Yes No

If yes, BGM source: CD Player Other: _____
 Tuner

Antenna Available for tuners? Yes No

Sound Pressure Level Chart

Typical Ambient Noise Level			Typical Environments	
Very High Noise	85-95 dB	Speech Almost Impossible to Hear	Construction Site • Loud Machine Shop Noisy Manufacturing • Printing Shop	95 dB
High Noise	75-85 dB	Speech is Difficult to Hear	Assembly Line • Crowded Bus/Transit Waiting Area Machine Shop • Shipping / Warehouse Supermarket (Peak Time) • Very Noisy Restaurant/Bar	85 dB
Medium Noise	65-75 dB	Must Raise Voice to be Heard	Bank/Public Area • Department Store Noisy Office • Restaurant/Bar Supermarket • Trans Waiting Area	75 dB
Low Noise	55-65 dB	Speech is Easy to Hear	Conversational Speech • Doctor's Office Hospital • Hotel Lobby Quiet Office • Very Quiet Restaurant/Bar	65 dB 55 dB