

# Community



## Description

The VERIS 1296 is a two-way, full-range loudspeaker system suitable for use in a wide spectrum of fixed installations.

Compact and extremely powerful, the 1296 handles applications ranging from jazz clubs and AV presentations, to rock and roll performances.

Its trapezoidal design allows it to be clustered with like units, forming powerful arrays.

The 90° x 60° pattern makes the VERIS 1296 ideal for applications requiring a wide coverage angle, such as in rooms that are wider than they are deep.

The enclosure may be suspended from its M10 threaded rigging points using a variety of hardware available from stock, or it may be installed by using an OmniMount™60 series mounting device.

The VERIS 1296 provides extended high frequency response, low distortion output, a tight, punchy bass response, and precise pattern control.

Featuring carefully designed crossovers that provide flat acoustic power response throughout the critical mid-range region, and Community's exclusive DYNA-TECH™ dynamic driver protection circuitry, the VERIS 1296 is a versatile performer for use in music and speech applications that require high quality, high power sound reinforcement at an affordable price.

## Applications

- Clubs
- Theatres
- Auditoria
- Worship Centers
- AV Presentations
- Fitness Centers

## Features

Internal DYNA-TECH™ Dynamic Driver Protection Circuitry

Black or White Finish Available

Ferrofluid Treated HF Driver for Improved Heat Dissipation

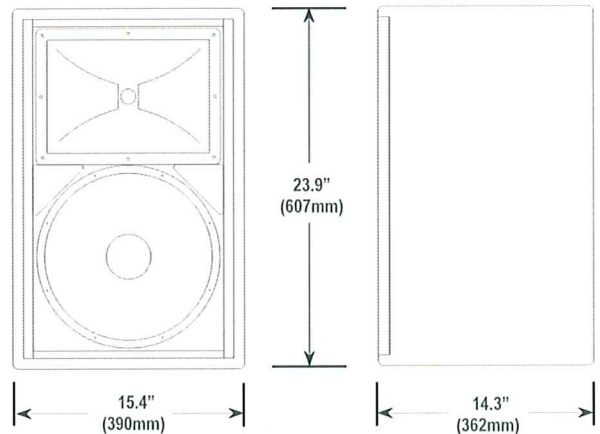
Non-Resonant, Non-Metallic HF Diaphragm for Reduced Distortion

Carbon Ring Cone Technology Provides 30% More Piston Area with Increased Excursion Capability

Terminal Strip and NL4 Compatible Connectors

# VERIS 1296

## TWO-WAY FULL-RANGE LOUDSPEAKER SYSTEM



## SYSTEM

**Format:** Two-way full-range, vented bass, trapezoidal enclosure

**Operating Range:** 60 Hz - 18 kHz

**Frequency Response:** 90 Hz - 13 kHz ( $\pm 3.5$  dB)

**Dispersion (-6 dB):** 90° H x 60° V (in vertical position)

**Crossover Frequency:** 1.5 kHz

**Maximum SPL @ 1m:** 120 dB continuous / 127 dB peak

**Sensitivity in SPL:** 97 dB (100 Hz - 12.5 kHz, 1/3 octave)  
(1W/1m, free space) 98 dB (250 Hz - 4 kHz, speech range)

**Max Power Handling:** 200W RMS (40V)  
500W Program / 990W Peak

**Impedance:** Nominal 8 $\Omega$  / Min. 4 $\Omega$  at 10.6 kHz

**Connectors:** Terminal Strip and NL4 Compatible

## TRANSDUCERS

**Low Frequency:** 12" (304mm) 200W RMS  
500W Program, 8 $\Omega$

**High Frequency:** 1" (25.4mm) 50W RMS  
125W Program, 4 $\Omega$

## MECHANICAL

**Enclosure:** Trapezoidal (22.5° included angle)  
11-ply cross-laminated birch

**Finish:** Black or white catalyzed polyester paint (specify at time of ordering)

**Rigging Provisions:** (13) M10 threaded rigging fittings<sup>1</sup>  
(4) M8 threaded fittings for OmniMount™60 bolt pattern

**Grille:** Powder coated steel, black or white

**Dimensions:** 23.9" (607mm) x 15.4" (390mm) x  
H x W x D 14.3" (362mm)

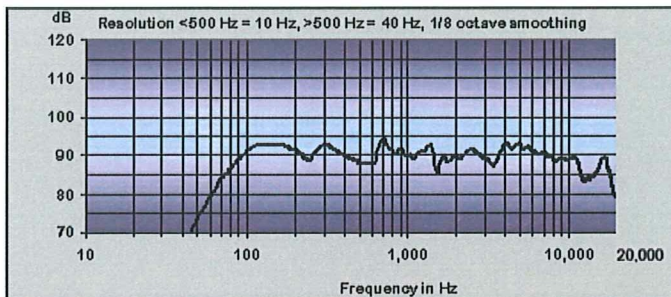
**Net Weight:** 36.5 lbs / 16.6 kg

<sup>1</sup> Due to ongoing development, specifications are subject to change without notice.

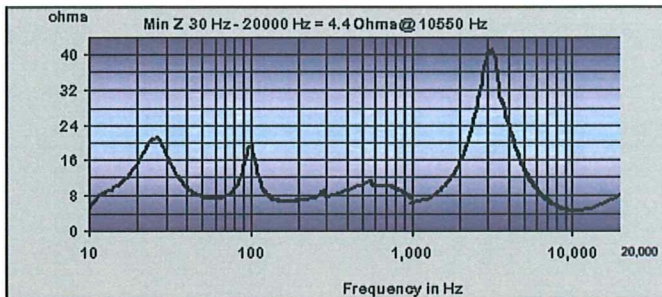
<sup>1</sup> 100 lbs / 45.4 kg per point in straight line, 10:1 safety factor.

# VERIS 1296

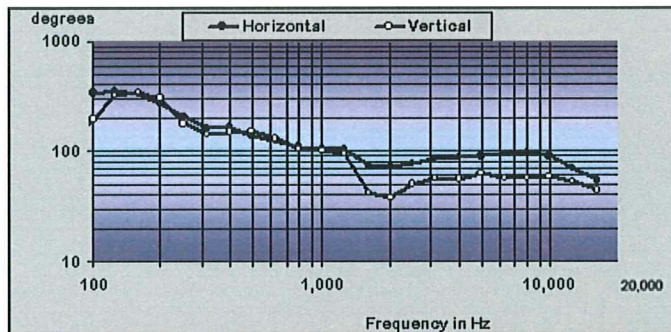
TWO-WAY FULL-RANGE LOUDSPEAKER SYSTEM



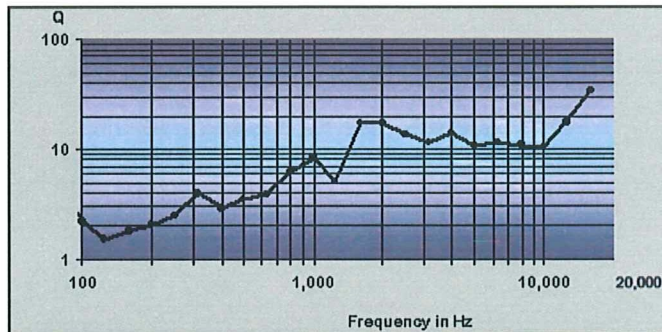
Amplitude versus Frequency (in free space)



Impedance versus Frequency



Directivity Index



Axial Q

Recommended Power: 420 - 600 WRMS at 8Ω

Recommended High-Pass Filter: 60 Hz\*

\*24 dB / octave or higher

## Installation Accessories



### Seat Track Kit

Quick and easy way to fly VERIS enclosures.

### Vertical Fly Kit

One kit arrays two enclosures; two kits array three enclosures, and so on.



### Tilting Bracket

Allows precise angling of a VERIS loudspeaker.



### Yoke Bracket

Provides 0°, 10°, & 20° inclination to wall surface.



### Tilting Brackets

Multiple brackets may be used to position one loudspeaker below another.



### Eyebolt Kits

Suspend VERIS enclosures safely and easily.



### Ceiling Mount Kit

Derives a hang point from a ceiling surface.

Community Professional Loudspeakers, 333 East Fifth Street, Chester, PA USA 19013-4511  
 TEL: 610-876-3400 · FAX: 610-874-0190 · www.communitypro.com