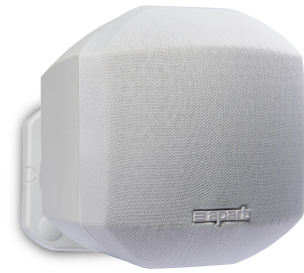


MASK2-W

2.5" compact design loudspeaker,
white



The MASK2 satellite low impedance loudspeaker offers a combination of design and great sound. With its 2.5" paper cone woofer, MASK2 is one of the smallest loudspeakers on the market and allows easy integration into every interior without compromising on sound quality. MASK2 and SUBLIME can be installed in a shop or bar where a loudspeaker is needed that creates an inviting atmosphere but also for residential projects where you need to install a sound system which does not take over the room.

Special brackets are supplied with the speakers allowing them to be mounted under various angles in corners or on solid surfaces such as walls or ceilings.

In combination with the compact dual coil SUBLIME subwoofer, these loudspeakers are the perfect audio solution for use in small to medium sized rooms or shops as well as for residential projects.

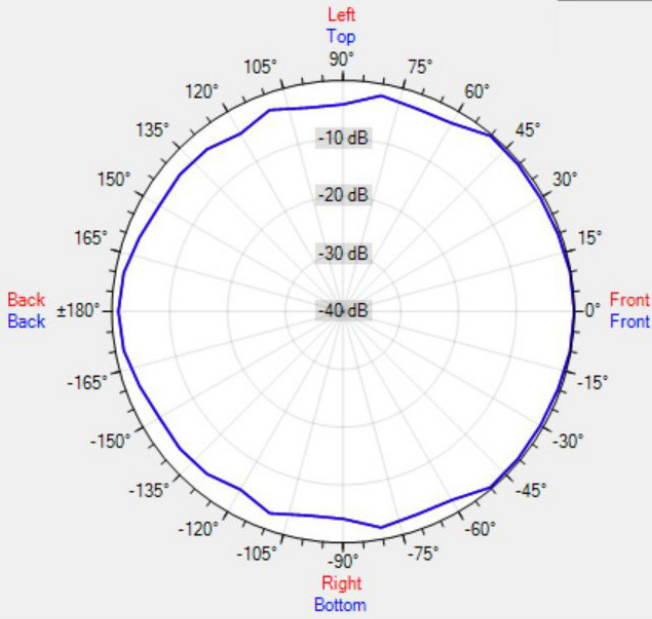
TECHNICAL SPECIFICATIONS

height in mm / in	94 / 3.70"	width in mm / in	82 / 3.22"
depth in mm / in	108 / 4.25"	loudspeaker system	full range
woofer size in inch	2.5	woofer cone material	paper
mounting system	turn / tilt bracket	color	black / white
impedance (ohms)	8	low impedance dynamic power in watts	50
low impedance RMS power in watts	35	SPL 1W/1m in dB	87
max SPL 1m in dB	98	frequency response in Hz	120 - 20K
main construction material	ABS plastic	grille main material	cloth
IP rating	60	Vertical dispersion angle 1000 Hz	180°
closest RAL colour (subject to deviations)	RAL9016 (W) / RAL9011 (BL)	Net weight product (kg) / lbs	0.48 / 1.05 lbs

POLAR PLOTS

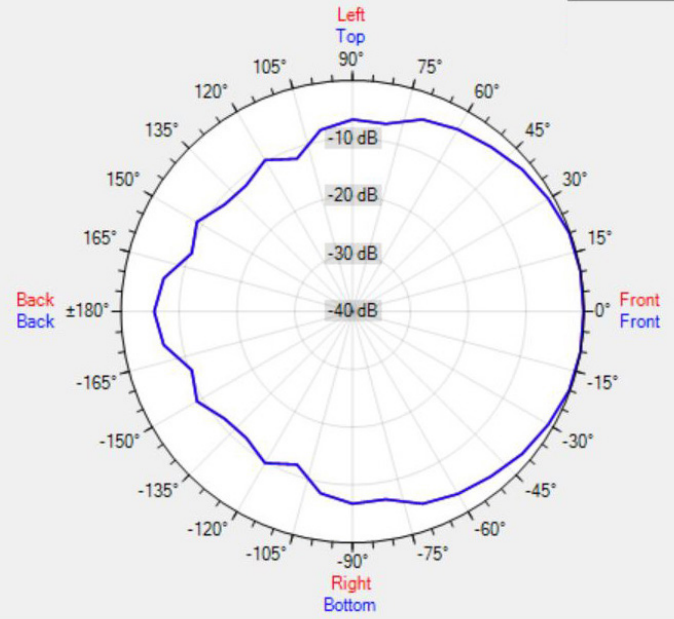
Data Shown: MASK2 (Apart Audio)
Display Parameters: Frequency: 1000Hz (1/24th Octave)

Horizontal
Vertical



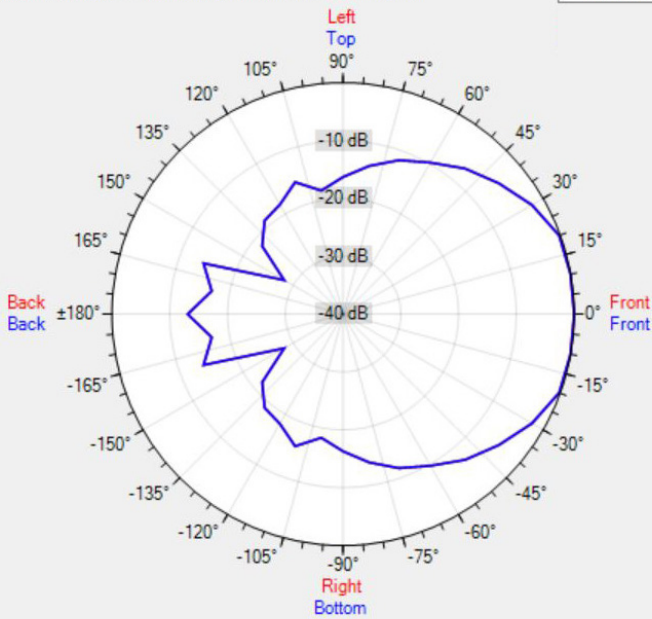
Data Shown: MASK2 (Apart Audio)
Display Parameters: Frequency: 2000Hz (1/24th Octave)

Horizontal
Vertical



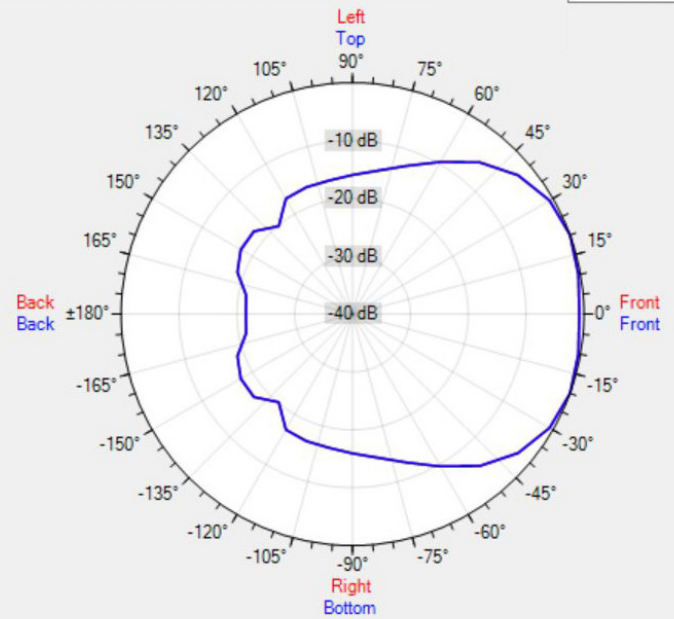
Data Shown: MASK2 (Apart Audio)
Display Parameters: Frequency: 4000Hz (1/24th Octave)

Horizontal
Vertical



Data Shown: MASK2 (Apart Audio)
Display Parameters: Frequency: 8000Hz (1/24th Octave)

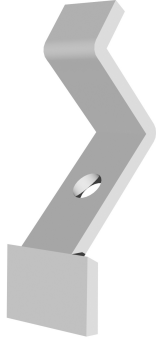
Horizontal
Vertical



[MORE PICTURES](#)



ACCESSORIES



MASK2CMT-W

Ceiling mounting tool for MASK2-W