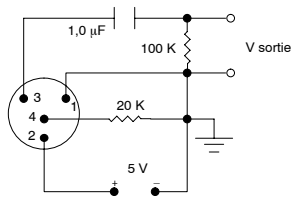


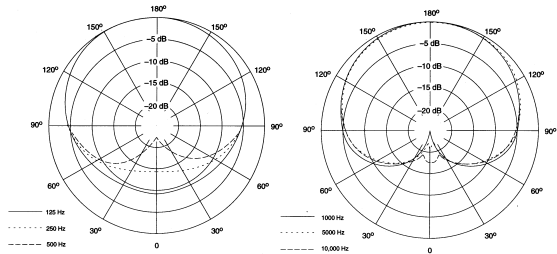
**ENGLISH**

<b>SPECIFICATIONS</b>	<b>WB98H/C Microphone</b> (with standard test circuit shown in Figure 1)	<b>BETA 98H/C Microphone</b> (with preamplifier)
Dynamic Range (maximum SPL to A-weighted noise level)	112.5 dB	132 dB (2.5 kΩ load)
Output Noise (equivalent SPL)	31 dB typical, A-weighted	
Signal-to-noise ratio	63 dB at 94 dB SPL (IEC 651)	
Polarity	Positive pressure on microphone diaphragm produces positive voltage on pins 3 and 4 with respect to pin 1 (ground).	Positive pressure on microphone diaphragm produces positive voltage on pin 2 relative to pin 3 of preamplifier output connector.
Recommended Operating Voltage	5 V (pin 2 to pins 3 and 4)	11 to 52 Vdc Phantom
Environmental Conditions	Operating temperatures: ..... -7° C to 49° C (20° F to 120° F) Storage temperatures: ..... -29° C to +74° C (-20° F to 165° F) Relative Humidity: ..... 0 to 95%	
Net Weight	Microphone w/cable and mini-connector (TA4F): 65 g (2.3 oz.)	Microphone w/cable and preamplifier: 156 g (5.5 oz.)



STANDARD TEST CIRCUIT

FIGURE 1



TYPICAL POLAR PATTERN

FIGURE 2