



Application Solutions

# R.5-94TZ

2-WAY HORN LOADED WEATHER-RESISTANT  
FULL-RANGE 200W (70/100V) LOUDSPEAKER

## SPECIFICATIONS

<b>Loudspeaker Type:</b>	2-way, horn loaded coaxial, weather-resistant
<b>Operating Range:</b>	85 Hz to 16 kHz 125 Hz to 10 kHz ( $\pm 4$ dB)
<b>Max Input Ratings:</b>	200W, 70V/100V
<b>Recommended Power Amplifier:</b>	25W to 200W @ 70 Volts 50W to 200W @ 100 Volts
<b>Sensitivity (1W/1m):</b>	100 dB SPL (125 Hz to 10 kHz 1/3 octave bands) 101 dB SPL (250 Hz to 4 kHz speech range)
<b>Maximum Output on 200W Tap:</b>	123 dB SPL
<b>200W Nominal Impedance:</b>	25 ohms
<b>200W Minimum Impedance:</b>	16.4 ohms @ 8.7 kHz
<b>Nominal -6dB Beamwidth:</b>	90° H (+1° / -46°, 1.6 kHz to 12.5 kHz) 40° V (+16° / +1°, 1.6 kHz to 12.5 kHz)
<b>Axial Q / DI:</b>	18.1 / 12.6, 1.6 kHz to 10 kHz
<b>Crossover Frequency:</b>	2 kHz
<b>Recommended Signal Processing:</b>	90 Hz high pass filter
<b>Drivers:</b>	LF (1) 12" Ferrofluid-cooled HF (1) 1" exit, titanium free, Ferrofluid-cooled
<b>Driver Protection:</b>	DYNA-TECH
<b>Input Connection:</b>	12 foot (4 m) SJOW #16 gauge
<b>Controls:</b>	4 position autoformer TAP select switch 70V switchable taps @ 200W, 100W, 50W, 25W 100V switchable taps @ 200W, 100W, 50W
<b>Enclosure:</b>	Rotomolded HDPE, light grey
<b>Mounting/Rigging Provisions:</b>	(5) 3/8-16 rigging points
<b>Grille:</b>	3-layer WeatherStop™ (Perforated steel, foam, stainless steel mesh)
<b>Required Accessories:</b>	24 dB/Oct high pass filter
<b>Supplied Accessories:</b>	(1) Stainless steel (304) yoke bracket (1) Aiming strap
<b>Optional Accessories:</b>	Pole mount system
<b>Dimensions—Height:</b>	16 inches (406 mm)
<b>Width:</b>	16 inches (406 mm)
<b>Depth:</b>	16 inches (406 mm)
<b>Weight:</b>	37 lbs (16.8 kg)
<b>Shipping Weight:</b>	42 lbs (19.1 kg)

### NOTES:

- Sensitivity: Free field pink noise measurement at 40 ft (12.2 m) at 60% power; extrapolated to 1 meter and an input of 2.83 volts RMS.
- Watts: All wattage figures are calculated using the rated nominal impedance.



## APPLICATIONS

- Fill speaker for stadia, athletic fields, arenas and race tracks
- Convention centers
- Outdoor background music / paging systems
- Theme and amusement parks
- Fairgrounds, rodeos, air shows
- Malls, cruise ships, skating rinks
- Swimming pools
- Portable sound systems

## FEATURES

- Rotomolded, UV enclosure
- Pattern control down to 630 Hz
- High efficiency
- Integral mounting points
- High power passive crossover
- DYNA-TECH active protection circuitry
- Multi-tap 200W autoformer for 70V and 100V inputs
- Five-year product warranty / Fifteen-year enclosure warranty

## DESCRIPTION

The R.5-94TZ two-way, full-range loudspeaker system is engineered to provide quality full-range sound projection in a variety of outdoor and indoor applications. Its wide range, smooth frequency response and high efficiency ensure both high fidelity music reproduction and superb projection of clear intelligible speech with very low distortion. An input autoformer with switchable taps provides impedance matching to 70V or 100V lines. Five-year limited product warranty; fifteen-year enclosure warranty.



Community Professional Loudspeakers, 333 East Fifth Street, Chester, PA 19013-4511 USA  
610-876-3400 · Fax 610-874-0190 · info@loudspeakers.net · www.loudspeakers.net

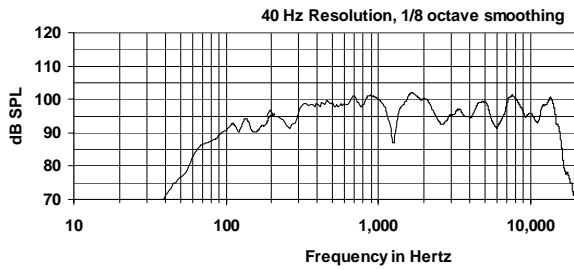


# R.5-94TZ

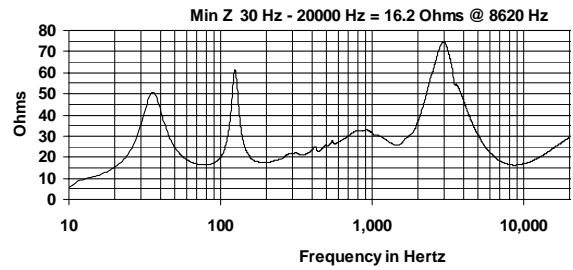
True to Specification

2-WAY HORN LOADED WEATHER-RESISTANT FULL-RANGE 200W (70/100V) LOUDSPEAKER

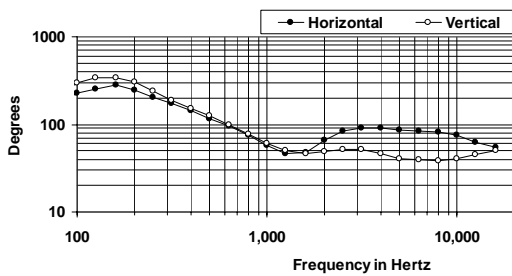
## FREQUENCY RESPONSE



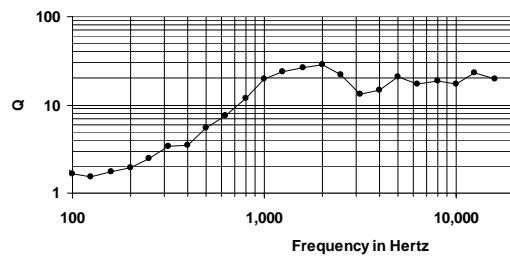
## 200W IMPEDANCE



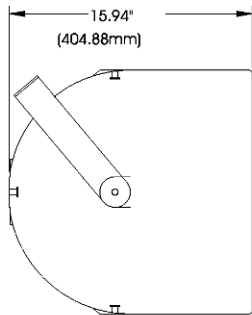
## BEAMWIDTH



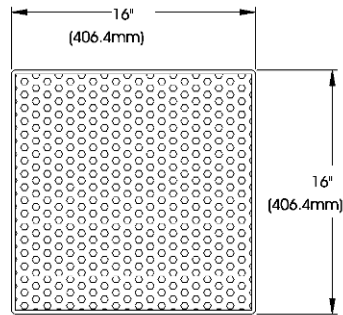
## AXIAL Q



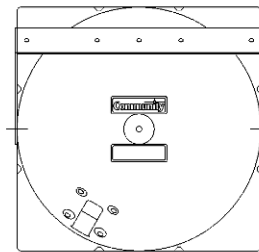
## DIMENSIONS



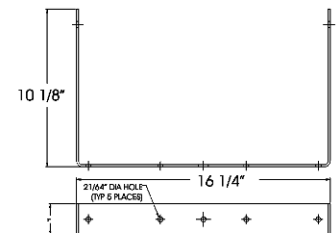
SIDE VIEW



FRONT VIEW



REAR VIEW



YOKE

## ARCHITECTURAL SPECIFICATIONS

The loudspeaker system shall be a horn-loaded, two-way, coaxial design consisting of one 12" Ferrofluid-cooled driver and one 1" exit, titanium free, Ferrofluid-cooled compression driver mounted on a horn inside the cabinet. The drivers shall be connected to a passive crossover network with a crossover frequency at 2 kHz with driver protection using DYNA-TECH active protection circuitry. The cabinet shall be a rotomolded polyethylene enclosure providing weather and UV resistance with a three-layer weather resistant grille. The input connection shall be one 12' (4m) SJOW #16 gauge cable with stripped ends. The enclosure shall incorporate five 3/8-16 rigging points for multiple mounting options. In addition, the loudspeaker will be supplied with one stainless steel yoke bracket and one multi-tap autoformer for 70V and 100V inputs. The loudspeaker system shall have an amplitude response of 125Hz to 10 kHz (+/- 4 dB SPL), an input capacity of 200W (70V/100V), 101 dB SPL sensitivity @ 2.83V / 1 meter between 250 Hz to 4 kHz at a nominal 8 ohm impedance. The nominal dispersion shall be 90° x 40° over a frequency range of 1.6 kHz to 12.5 kHz. The dimensions of the enclosure are defined as 16" x 16" x 16" (HWD) at a weight of 37 lbs.

*Community strives to improve its products on a continual basis. Specifications are therefore subject to change without notice.*



Community Professional Loudspeakers, 333 East Fifth Street, Chester, PA 19013-4511 USA  
610-876-3400 · Fax 610-874-0190 · info@loudspeakers.net · www.loudspeakers.net