

### Description

Lowell grille Models WB-8H and WB-8 are the industry standard when it comes to steel ceiling grilles for 8" loudspeakers. Their clean, contoured edge appearance and economical cost makes them popular for installation in offices, hotels, schools, medical, retail, and commercial facilities all over the world.

Grilles are precision formed from a single piece of 22-gauge steel with a perforated center and beveled edge for attractive ceiling installation. Model WB-8H features four 8-32 Phillips-head screws for loud-speaker installation where Model WB-8 features four 8-32 x 1" welded studs with palnuts for concealed loudspeaker mounting. Both are equipped with four white 8-32 x 1-1/2" Phillips-head screws for attaching the speaker-grille assembly to the backbox or mounting ring (order separately - see page 2). Grilles are finished in white powder epoxy for long lasting quality appearance.

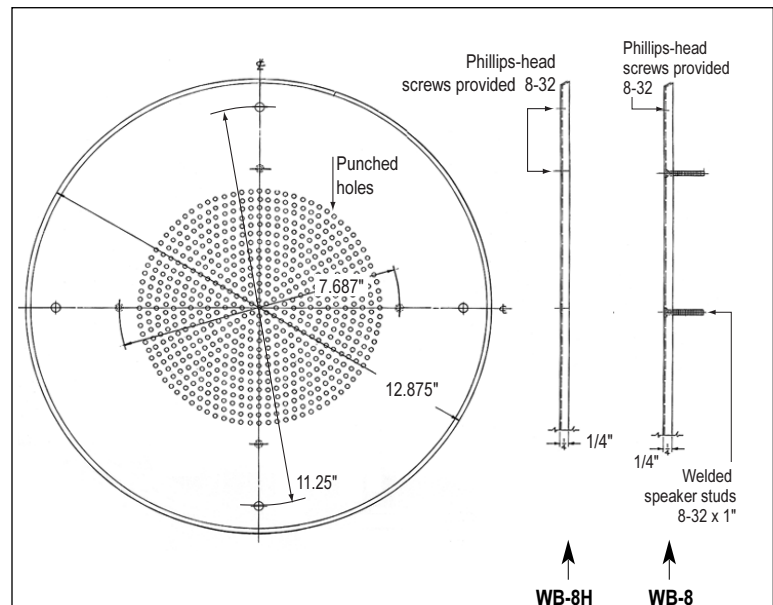
Lowell offers a wide selection of 8" speaker drivers with optional 70V or 25V transformer for distributed voice paging and music. Popular 8" drivers include Model 805 (12W dual cone), 810 (15W dual cone), 8C10MR (15W moisture resistant), CT830 (20W coaxial), CT8320 (25W coaxial), and 8A50 (50W coaxial). Additionally, Lowell's 15W Unihorn Model LUH-15T will also fit Grille Model WB8 if used with companion backbox Model CP84 or XCP84.

### A & E Specifications

The grille for 8" speaker drivers shall be Lowell Model \_\_\_\_ (WB-8H, WB-8). It shall be fabricated one-piece 22-gauge steel reinforced with a peripheral flange of 60 degrees. The grille diameter shall be 12.875" with a shallow mounting projection of 0.25". Model WB-8H grille shall have four 0.218" holes spaced at 90 degree intervals for screw mounting the specified 8" speaker. Model WB-8 shall include welded studs for mounting specified 8" speaker. Each grille shall also have four 0.25" holes spaced at 90 degree intervals on a 11.25" bolt circle for mounting specified backbox or mounting ring. Models shall be finished in white powder epoxy and include white screws for backbox mounting. Companion backbox or mounting ring shall be Lowell Model \_\_\_\_\_. Companion tile bridge or channel rails for suspended installations shall be Lowell Model\_\_\_\_\_.



**WB-8H Steel Grille** 8 screws - white epoxy finish      **WB-8 Steel Grille** 4 screws, 4 concealed studs - white epoxy finish



#### Grille Specifications and Companion Mounting Accessories (order separately)

Grille Model	Speaker Size*	Grille Size	Mounting Provisions	Material	Color	Backbox or Mtg. Ring Choices (Choose one, plus tile bridge or rails if required.)	T-Bridge or Rails (if required for suspended ceilings)
WB-8H	8"	12.875" Dia.	8 screws	Steel	White	CP84, CP87, CP810, DX58, DX108 .....LBS8-CP or SS Rails	
WB-8	8"	12.875" Dia.	4 screws, 4 studs	Steel	White	XCP84, XCP87, XCP810, 8XD4, 8PSBX ..LBS8 or LBS8-R1 RF841, RF871 .....N.A. No backbox desired .....LBS8 or LBS8-R1 Mtg ring instead of backbox: PR8(-1624), RMP8, XPR8 .....N.A.	

\*Lowell offers a selection of 8" speakers with optional 70V or 25V transformers and the 15W Unihorn with 3.72"D - see the Description paragraph or detailed specs on line.



## WB-8H, WB-8

### Steel Grilles with Screw-mount Installation for 8" Speakers

#### Companion mounting accessories for grille Models WB-8H, WB-8 (order separately)

AUDIO

12"/10" Speakers & Accessories

8" Speakers & Accessories

6" Speakers & Accessories

4" Speakers & Accessories

Horn Speakers & Accessories

Masking Speakers & Generators

Control Accessories & Electronics

Grilles - Ceiling / Wall



#### Backbox Details (Choose one backbox or mounting ring, plus tile bridge or rails if required)

Model	Size	Features	Option (suffix model)
CP84	11.938"Dia. x 4.063"D	Extended lip for sheetrock	---
CP87	11.938"Dia. x 6.687"D	Extended lip for sheetrock + batting	---
CP810	11.938"Dia. x 10.063"D	Extended lip for sheetrock + batting	---
DX58	11.938"Dia. x 8"D	.5 cu.ft., Extended lip + batting	---
DX108	15"Dia x 10.125"D	1 cu.ft., Extended lip + batting	---
RF841	10.063"Dia. x 4.063"D	Retrofit w tension brkt.	---
RF871	10.063"Dia. x 6.688"D	Retrofit w tension brkt.	---
XCP84	10.063"Dia. x 4.063"D	Flat flange for tile ceiling	-S (straps)
XCP87	10.063"Dia. x 6.687"D	Flat flange for tile ceiling + batting	-S (straps)
XCP810	10.063"Dia. x 10.063"D	Flat flange for tile ceiling + batting	-S (straps)
8PSBX*	10"Dia. x 4"D	Plastic, stacks for warehousing	---
8XD4*	10"Dia. x 4"D	Steel, stacks for warehousing	-P (plenum), -S (straps)

\* Stackable Models 8PSBX and 8XD4 have a conical shape that will not accept a speaker with a large transformer such as TLM870.

#### Mounting Ring Details (Choose one backbox or mounting ring, plus tile bridge or rails if required)

Model	Size	Features
PR8	13.25" Dia	Extended lip for sheetrock, steel
PR8-1624	13.25" Dia with ears	Extended lip for sheetrock plus mounting ears for 16" & 24" studs, steel
RMP8	13.813" Dia.	Plastic
XPR8	11.75" Dia.	Flat flange for tile ceiling, steel



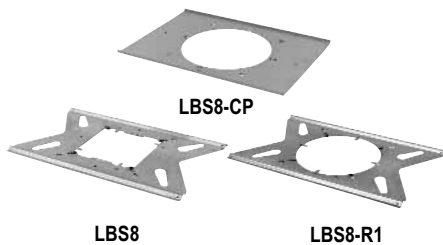
PR8-1624



PR8



XPR8



#### Tile Bridge Details (use tile bridge or rails if required for suspended ceiling)

Model	Size	Features
LBS8-CP	23.75"L	Requires noted backbox
LBS8	23.75"L	8.5"SQ opening with screw or Twist n' Lock backbox mounting
LBS8-R1	23.75"L	10.75"Dia opening with screw or Twist n' Lock backbox mounting



SS Series

#### Channel Rail Details (use tile bridge or rails if required for suspended ceiling)

Model	Size
SS-24	23.75"L
SS-30	30"L
SS-48	47.75"L