

## Features

- Formed construction is lightweight with rigid support.
- Mounts 8" speakers with noted Lowell grille and backbox combinations.
- **Mounts backbox Models CP84, CP87, CP810, DX58 and DX108.**

## Description

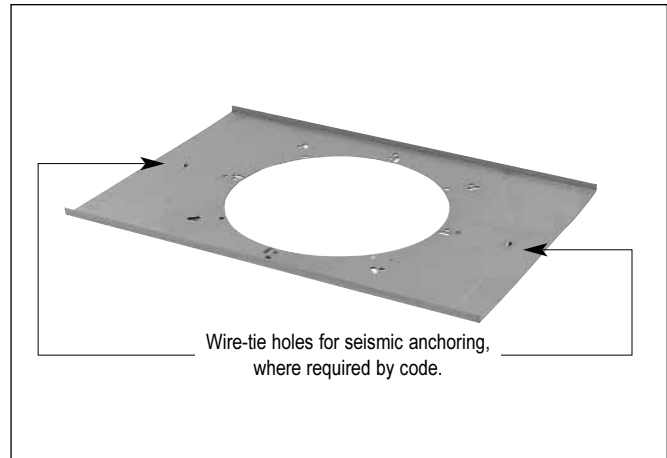
Lowell tile bridge Model LBS8-CP is engineered to distribute the speaker assembly weight to the ceiling support system in a suspended 2' x 2' or 2' x 4' tile ceiling system. Tile bridges are often required, for safety reasons, by local building codes, and for aesthetics to reduce the potential of unsightly ceiling tile sag.

Model LBS8-CP tile bridge is designed specifically to mount noted grilles and backbox Series CP8 (available in 4", 5", 7" and 10" depths) or 1 cu.ft. Model DX108. Unlike some of Lowell's other tile bridges, Model LBS8-CP must be installed using one of the recommended backboxes as a speaker-grille assembly will not mount directly to this tile bridge. This is the only tile bridge that will mount CP8 Series, DX58 and DX108 backboxes.

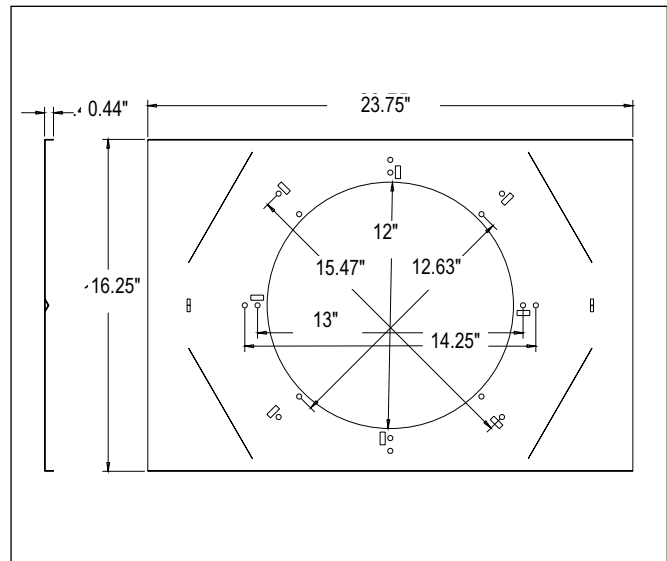
Model LBS8-CP is galvanized 20-gauge steel size 23.75"L x 16.25"W with a round center opening size 12"Dia. with two wire-tie points for seismic anchoring, where required by code.

## A & E Specifications

Tile bridge shall be Lowell Model LBS8-CP. It shall be formed from 20-gauge galvanized steel and be engineered to support and distribute the weight of an 8" speaker assembly to the ceiling support system in a 2' x 2' or 2' x 4' suspended ceiling installation. It shall include provisions for seismic anchoring where required by code. Tile bridge shall mount 8" Lowell grille Model \_\_\_\_\_ with attached 8" Lowell speaker Model \_\_\_\_\_ and shall accept required Lowell backbox Model \_\_\_\_\_.



Tile bridge Model LBS8-CP



LBS8-CP dimensions

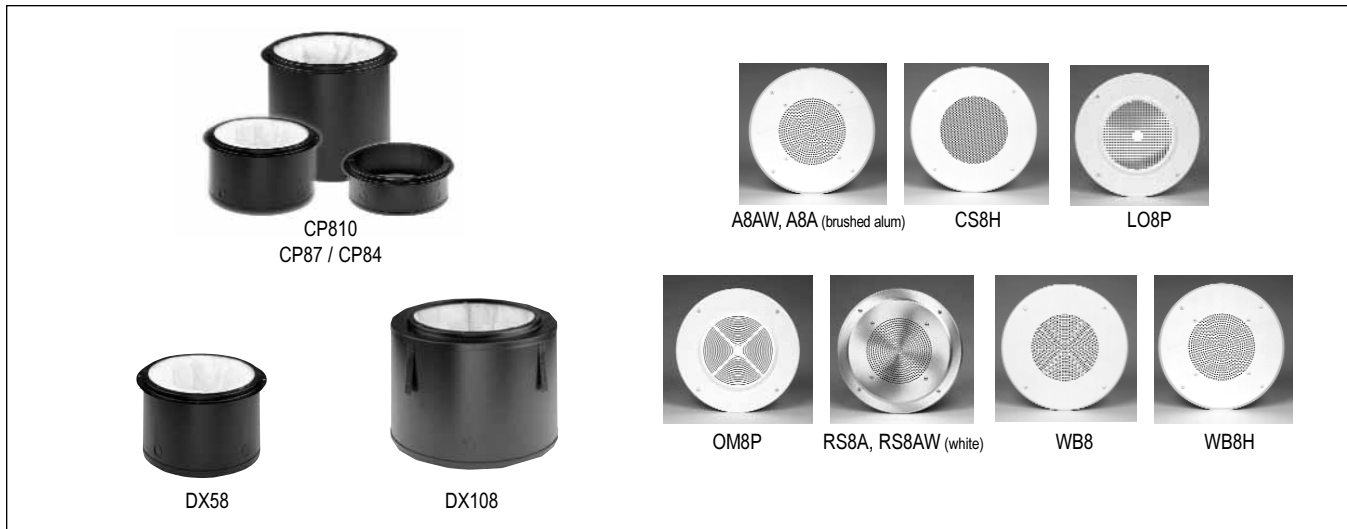
### TILE BRIDGE SPECIFICATIONS

Model	Mounts Speaker	Outside Dimensions	Opening Size	Mounts Backbox* (required)	Mounts Grille
LBS8-CP	8"	23.75"L x 16.25"W	12"Dia.	CP84, CP87, CP810, DX58, DX108	A8-A(W), CS-8H, LK-8, LO8-P, OM8-P, RS8-A(W), WB-8, WB-8H

\* Note: Tile bridge Model LBS8-CP MUST be installed with the appropriate backbox as the grille will not mount directly to the tile bridge.



**Companion Mounting Accessories for LBS8-CP**



**Backbox Details** (Choose one backbox, plus tile bridge or rails if required)

Model	Size	Features
CP84	11.938"Dia. x 4.063"D	Extended lip for sheetrock
CP87	11.938"Dia. x 6.687"D	Extended lip for sheetrock + batting
CP810	11.938"Dia. x 10.063"D	Extended lip for sheetrock + batting
DX58	11.938"Dia. x 8"D	.5 cu.ft., Extended lip + batting
DX108	15"Dia x 10.125"D	1 cu.ft., Extended lip + batting

**Grille Details**

Grille Model	Speaker Size	Grille Size	Type	Material	Color	Backbox	+	T-Bridge (if required for suspended ceilings)
A8-A	8"	12.875" Dia.	8 screws	Alum.	Brushed Alum.	CP8 Series	LBS8-CP	
A8-AW	8"	12.875" Dia.	8 Screws	Alum.	White			
CS-8H	8"	12.875" Dia.	4 screws	Steel	White			
LO8-P	8"	12.625" Dia.	4 screws	Plastic	White			
OM8-P	8"	12.625" Dia.	4 screws	Plastic	White			
RS8-A	8"	12.625" Dia.	8 screws	Alum.	Brushed Alum			
RS8-AW	8"	12.625" Dia.	8 screws	Alum.	White			
WB-8	8"	12.875" Dia.	4 Screws	Steel	White			
WB-8H	8"	12.875" Dia.	8 Screws	Steel	White			