

## DOUBLE WIDE STAGE POCKETS

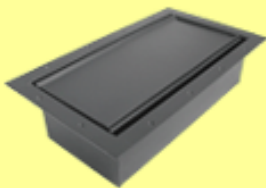
Ace Backstage Co.'s Largest-Sized Stage Pocket, the Double Wide Stage Pocket is made of heavy duty steel. The flush Double Wide Stage Pocket conceals audio, data, communications, electric, video,

voice, AC power, and switches etc. below the floor surface for easy access and to prevent connector damage. The Largest Capacity inter-changeable panel system permits easy custom connector panel configurations. The Double Wide Stage Pocket will mount (2) optional ACE #PNL-1212 Panels (Each Panel will mount 12 "Connectrix" Connectors for a possible 24 "Connectrix" Connectors (24 sq. in. panel area each) or (4) ACE #PNL-106 Panels (which will also mount 6 "Connectrix" Connectors each (11 sq. in. panel area each - 6 Connectors each for a possible 24 "Connectrix" Connectors). All Ace Stage Pockets are welded steel construction, with an 11 ga. (.120" thick) lid and mounting flange and a 16 ga. (.060" thick) Stage Pocket Body. The Double Wide Stage Pocket resists bending even under the most severe stage loads. Removable spring loaded hinge pins permit easy exchange of lids for carpet lid, locking lid and other custom application lids.

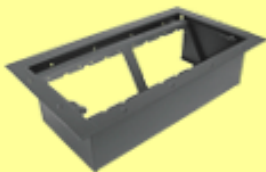
A generous cable way slot of 3/8" x 16" permits easy cable exit from the stage pocket, even for large gauge speaker cables. Two cableway slot closures close the slot when not in use. This Stage Pocket has an easy installation into 16.8" x 8.5" cutout in the stage floor. Open easy access from top or back to connector panels for easy installation. A scratch/wear resistant finish, oven cured powder coat is electro-staticly applied inside and outside. Decorator neutral antique copper vein, antique silver vein or textured black finishes are standard. Brass and Stainless Steel versions available by special order. Rubber lid stops cradle the lid to prevent lid rattle.

Ace Backstage Co.'s Standard Vertical Slant Panel Stage Pocket Systems offer "Connectivity" Solutions with a flexible, reliable, and simplistic design. The flexible design of the Vertical Slant Panel Stage Pockets Trim Bezel and Lid Assemblies, Custom and Prefabricated Aluminum "Connectrix" Panels, and large selection of "Connectrix" Connectors allow the Stage Pockets to be installed in many different applications, including audio, communications, data, electric, video, and voice terminations. Ace Backstage Co.'s Standard General Use Vertical Slant Panel Stage Pockets feature welded heavy duty steel construction, choice of 3 decorator oven cured powder coat finishes (inside and outside), 2 lid choices (Standard and Carpet), plus solid brass or stainless steel trim bezel lid assembly finishes. Add a host of stock prefabricated or custom audio, communications, data, electric, video, and voice panels and connectors for a complete Stage Pocket System.

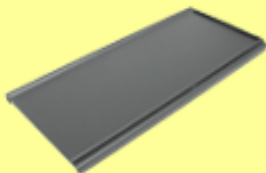
Ace Backstage Co.'s Vertical Slant Panel Stage Pockets are available in a variety of sizes (Mini, Half, Full, and Double Wide Stage Pockets) making them flexible in both form and function and able to meet your individual requirements. All Standard Vertical Slant Panel Stage Pockets are UL Listed except for the Mini Pocket. For more details on Ace Backstage Co.'s Stage Pocket Systems call the Ace Order Desk at 661-295-5760. Listed below is information on Ace Backstage Co.'s "Standard" Vertical Slant Panel Double Wide Stage Pockets. For more information on Ace Backstage Co.'s other Stage Pockets, click on [Vertical Slant Panel Stage Pockets](#) or [Super Horizontal Panel Stage Pockets](#).

**MODEL #****▶ #124CLBK****POCKET  
IMAGE****STAGE POCKET DESCRIPTION:**

#124CLBK Double Wide Stage Pocket with Textured Black Powder Coat Finish Stage Pocket Body and Black Powder Coat Finish Carpet Lid. #124CLBK Stage Pocket has a 16 ga. (.060" thick) Steel Pocket Body and an 11 ga. (.120") Steel Lid and Mounting Flange. Removable Spring Loaded Hinge Pins permit easy exchange of Lids for Standard and Locking Lids. Rubber Lid stops cradle lid to prevent lid rattle.

**POCKET  
BODY IMAGE****DOUBLE WIDE STAGE POCKET BODY DESCRIPTION:**

Standard Double Wide Stage Pocket Body with Textured Black Powder Coat Finish. Click on [Double Wide Stage Pocket Body Styles](#) to view all versions.

**POCKET  
LID IMAGE****DOUBLE WIDE STAGE POCKET LID DESCRIPTION:**

#004CLBK Standard Double Wide Stage Pocket Recessed Carpet Flush Hinged Lid with Black Powder Coat Textured Finish. The Recessed Carpet Flush Hinged Lid assembly fits flush on top of the Double Wide Stage Pocket body. A piece of carpet is placed on top of the Carpet Lid and is glued in place. Note that the Carpet Lid has a 5/32" raised "Trim Lip" to help secure the carpet in place. Click on

[Double Wide Stage Pocket Lid Styles](#) to view all versions.

**PANEL  
CAPACITY****DOUBLE WIDE STAGE POCKET PANEL CAPACITY:**

Standard Double Wide Stage Pocket #124CLBK accepts either (4) #PCU-100 Series or (4) #PE Series or (4) #PNL-100 Series or (4) #PSW-100 Series or (2) #PCU-120 Series or (2) #PNL-120 Series Panels. Click on [Stock Double Wide Stage Pocket Panels and Panel Configurations](#) to view all Panels that will mount in the Double Wide Stage Pocket.

**CONNECTOR  
CAPACITY****DOUBLE WIDE STAGE POCKET CONNECTOR CAPACITY:**

Standard Double Wide Stage Pocket #124CLBK has the Capacity to mount up to 24 "Connectrix" Connectors. Click on [Stock "Connectrix" Connectors](#) to view all versions.