



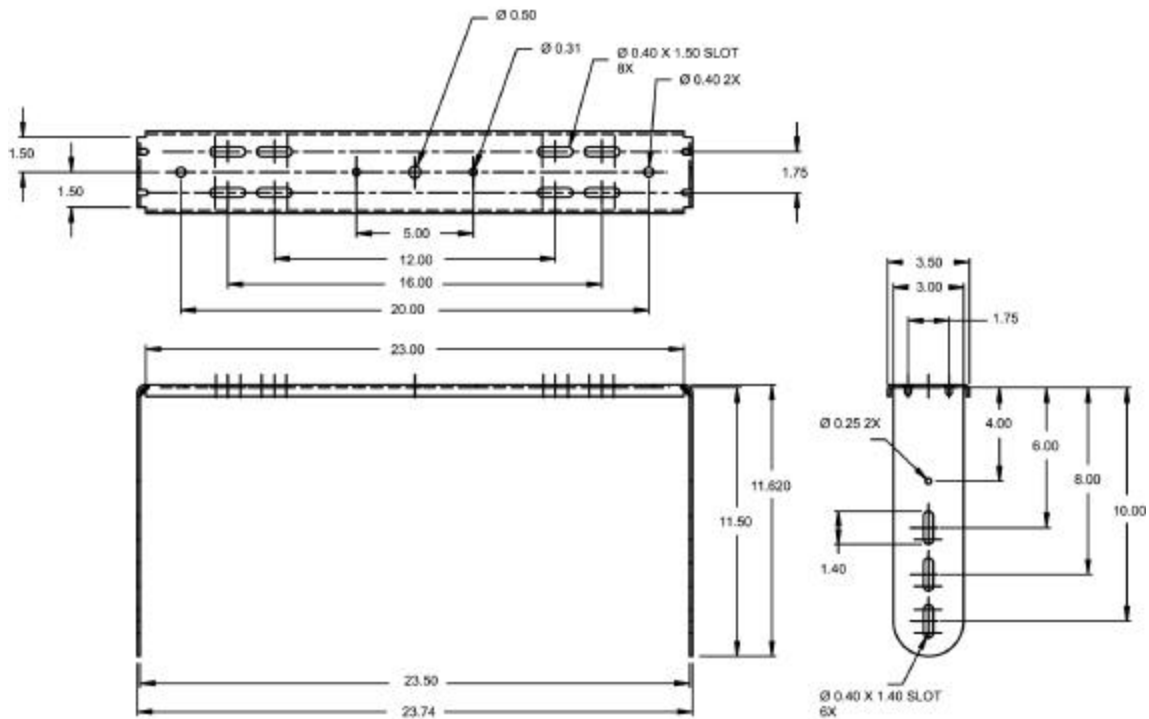
# MTC-30UB(-WH)

## Control 30 U-Bracket Accessory

The new **MTC-30UB(-WH)** optional U-Bracket accessory is designed for use with the JBL Professional Control 30. The U-Bracket allows installation of the enclosure to flat sturdy surfaces when the included InvisiBall Mounting Structure is not appropriate.

The MTC-30UB is constructed of 11 Gauge Steel (0.12 in. thick), and is finished in Polyester Based, Black or White (-WH) Powder Coating.

### Dimensional Drawing



MTC-30UB(-WH)

Dimensions in Inches