



Application Solutions

R.5COAX66T

2-WAY COAXIAL WEATHER-RESISTANT
FULL-RANGE LOUDSPEAKER

SPECIFICATIONS

Loudspeaker Type:	2-way, coaxial, weather-resistant, full-range
Operating Range:	80 Hz to 18 kHz 90 Hz to 13 kHz (± 3.5 dB) 200 / 100 / 50 / 25 watt autoformer taps @ 70.7V
Sensitivity (1W/1m):	98 dB SPL (100 Hz to 13 kHz 1/3 octave bands) 97 dB SPL (250 Hz to 4 kHz speech range)
200W Nominal Impedance:	25 Ohms
Minimum Impedance:	15.9 Ohms @ 9.8 kHz
Nominal -6dB Beamwidth:	60°H (+20° / -6°, 1.6 kHz to 12.5 kHz) 60°V (+20° / -3°, 1.6 kHz to 12.5 kHz)
Axial Q / DI:	15.2 / 11.8, 1.6 kHz to 12.5 kHz
Crossover Frequency:	2 kHz
Recommended Signal Processing:	80 Hz high pass filter
Drivers:	LF 1 x 12" HF 1 x 1" exit titanium free, Ferrofluid-cooled
Driver Protection:	DYNA-TECH protection circuitry
Input Connection:	12 foot (4 m) SJOW #16 gauge
Controls:	4-position tap selector
Enclosure:	Rotomolded grey polyethylene
Mounting/Rigging Provisions:	(5) 3/8-16 rigging points
Grille:	3-layer WeatherStop™ stainless steel
Required Accessories:	24 dB/Oct high pass filter
Supplied Accessories:	(1) Stainless steel (304) yoke bracket (1) Aiming strap
Optional Accessories:	Pole mount system
Dimensions—Height:	16 inches (406 mm)
Width:	16 inches (406 mm)
Depth:	16 inches (406 mm)
Weight:	38.5 lbs (17.46 kg)
Shipping Weight:	47 lbs (21.3 kg)



APPLICATIONS

- Convention centers
- Fill speaker for stadia, athletic fields, arenas and race tracks
- Outdoor background music / paging systems
- Theme and amusement parks
- Fairgrounds, rodeos, air shows
- Malls, cruise ships, skating rinks
- Swimming pools
- Portable sound systems

FEATURES

- High fidelity
- Factory-installed 200W, 70V autoformer
- Rotomolded, UV stable enclosure
- High efficiency
- Integral mounting points
- High power passive crossover
- Five-year product warranty / Fifteen-year enclosure warranty

DESCRIPTION

The R.5COAX66T high fidelity, two-way, full-range loudspeaker system is engineered to provide quality full-range sound in a variety of outdoor and indoor applications. Its wide range, smooth frequency response and high efficiency ensure both high fidelity music reproduction and superb projection of clear intelligible speech with very low distortion. The R.5COAX66T comes with a factory-installed 200W, 70V autoformer. Five-year limited product warranty; fifteen-year enclosure warranty.

NOTES:

1. Sensitivity: Free field pink noise measurement at 20 ft (6.1 m) at 50% power; extrapolated to 1 meter and an input of 70 volts RMS.
2. Watts: All wattage figures are calculated using the rated nominal impedance.



Community Professional Loudspeakers, 333 East Fifth Street, Chester, PA 19013-4511 USA
610-876-3400 | Fax 610-874-0190 | info@loudspeakers.net | www.loudspeakers.net

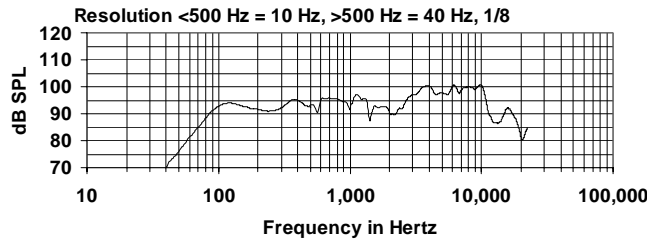


True to Specification

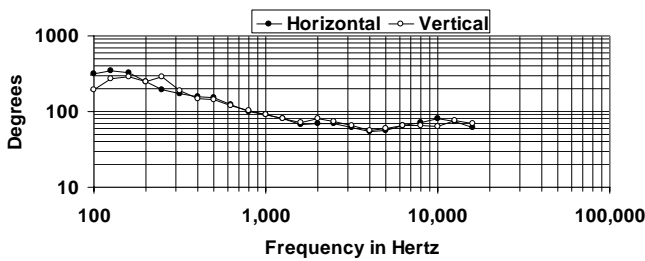
R.5COAX66T

2-WAY COAXIAL WEATHER-RESISTANT
FULL-RANGE LOUDSPEAKER

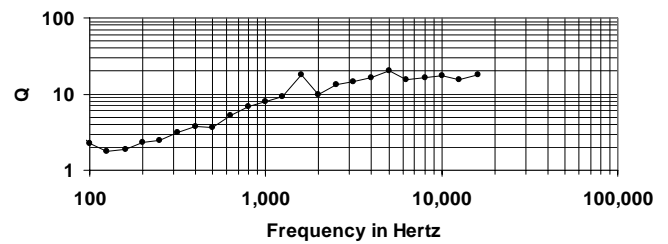
FREQUENCY RESPONSE



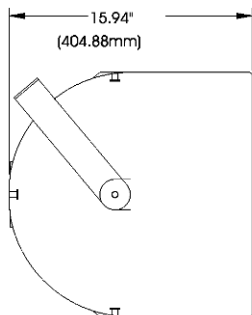
BEAMWIDTH



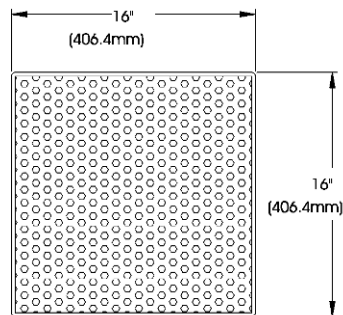
AXIAL Q



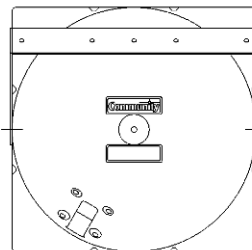
DIMENSIONS



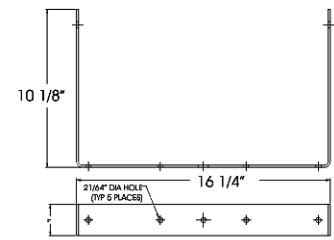
SIDE VIEW



FRONT VIEW



REAR VIEW



YOKE

ARCHITECTURAL SPECIFICATIONS

The loudspeaker system shall be a two-way, full-range bass reflex design with a single cast 12" and one 1" exit HF driver coaxially mounted on a 60° x 60° horn. Drivers shall be connected to an integral crossover with a crossover frequency of 2 kHz and integral over-current protection circuitry. The cabinet shall be a roto-molded polyethylene enclosure providing weather and UV resistance with a three-layer weather resistant grille. The input connection shall be one 12' (4m) SJOW #16-gauge cable with stripped ends. The enclosure shall incorporate five 3/8-16 rigging points for multiple mounting options. In addition, the loudspeaker will be supplied with one stainless steel yoke bracket and one multi-tap autoformer for 70V and 100V inputs. The loudspeaker system shall have an amplitude response of 90 Hz to 13 kHz (+/-3.5dB), an input capacity of 200W (70V/100V), 98 dB Sensitivity at 1W/1m. The nominal dispersion shall be 60° H x 60° V from 1.6 kHz to 12.5 kHz. The dimensions of the enclosure are defined as 16" x 16" x 16" (HWD) at a weight of 38.5 lbs.

Community strives to improve its products on a continual basis. Specifications are therefore subject to change without notice.



Community Professional Loudspeakers, 333 East Fifth Street, Chester, PA 19013-4511 USA
610-876-3400 | Fax 610-874-0190 | info@loudspeakers.net | www.loudspeakers.net