



Application Solutions

R.25-94TZ

TWO-WAY, FULL-RANGE, 200W (70/100V)
WEATHER-RESISTANT LOUDSPEAKER

SPECIFICATIONS

Loudspeaker Type:	2-way, horn loaded, coaxial, weather-resistant
Operating Range:	100 Hz to 16 kHz 160 Hz to 13 kHz (± 3 dB)
Max Input Ratings:	200W, 70V/100V
Recommended Power Amplifier:	25W to 200W @ 70V 50W to 200W @ 100V
Sensitivity (1W/1m):	96 dB SPL (160 Hz to 10 kHz 1/3 octave bands) 96 dB SPL (250 Hz to 4 kHz speech range)
Maximum Output on 200W Tap:	119 dB SPL
200W Nominal Impedance:	25 ohms
200W Minimum Impedance:	16.2 ohms @ 9 kHz
Nominal -6dB Beamwidth:	90°H (+7° / -13°, 2 kHz to 10 kHz) 40°V (+35° / -10°, 2 kHz to 10 kHz)
Axial Q / DI:	13.5 / 11.3, 2 kHz to 10 kHz
Crossover Frequency:	2 kHz
Recommended Signal Processing:	100 Hz high pass filter
Drivers:	LF (1) 8" cast frame, Cool-Coil™ HF (1) 3/4" exit, titanium free, Ferrofluid-cooled
Driver Protection:	DYNA-TECH protection circuitry
Input Connection:	16-2 SJOW (12 ft / 4 m)
Controls:	4 position autoformer TAP select switch 70V switchable taps @ 200W, 100W, 50W, 25W 100V switchable taps @ 200W, 100W, 50W
Enclosure:	Rotomolded HDPE, light gray color
Enclosure Hardware:	None
Mounting/Rigging Provisions:	(5) rigging points (M8 hardware) 1-3/8" pole mount socket
Grille:	16-gauge perforated stainless steel, 3-layer WeatherStop™ grille
Required Accessories:	24 dB/Oct high pass filter
Supplied Accessories:	(1) Stainless steel (304) yoke bracket (1) Aiming strap
Optional Accessories:	Pole mount system
Dimensions—Height:	11.3 inches / 287 mm
Width:	11.3 inches / 287 mm
Depth:	11.3 inches / 287 mm
Weight:	23 lbs / 10.4 kg
Shipping Weight:	26.5 lbs / 12 kg

NOTES:

- Sensitivity: Free field pink noise measurement at 20 ft (6.1 m) at 60% power; extrapolated to 1 meter and an input of 2.83 volts RMS.
- Watts: All wattage figures are calculated using the rated nominal impedance.



APPLICATIONS

- Convention centers
- Fill speaker for stadia, athletic fields, arenas and race tracks
- Outdoor background music / paging systems
- Theme and amusement parks
- Fairgrounds and rodeos
- Malls, cruise ships, skating rinks
- Swimming pools

FEATURES

- High fidelity
- All horn loaded
- Multi-tap 200W autoformer for 70V and 100V inputs
- Rotomolded, UV resistant enclosure
- High efficiency
- Integral mounting points
- High power passive crossover
- Five-year product warranty / Fifteen-year enclosure warranty

DESCRIPTION

The R.25-94TZ is a 2-way, full-range loudspeaker system designed to provide high quality voice and music reproduction in applications requiring extreme weather resistance. It is designed to withstand long-term exposure to tough, environmental conditions and to provide performance normally associated only with indoor loudspeakers.

The R.25-94TZ has an 8-inch (203mm) cone LF driver and a 3/4-inch (20 mm) exit HF compression driver with a weather resistant diaphragm. The HF driver is coupled to a nominal 90° x 40° horn. The HF assembly is coaxially mounted with the LF driver. An input autoformer with switchable taps provides impedance matching to 70V or 100V lines. The enclosure and HF horn are molded of UV resistant gray polyethylene. All exposed hardware is stainless steel. The Weather-Stop™ grille assembly, retained by stainless steel screws to the front of the enclosure, consists of three layers.



Community Professional Loudspeakers, 333 East Fifth Street, Chester, PA 19013-4511 USA
610-876-3400 | Fax 610-874-0190 | info@loudspeakers.net | www.loudspeakers.net

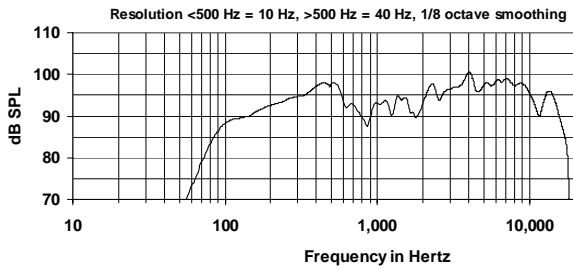


True to Specification

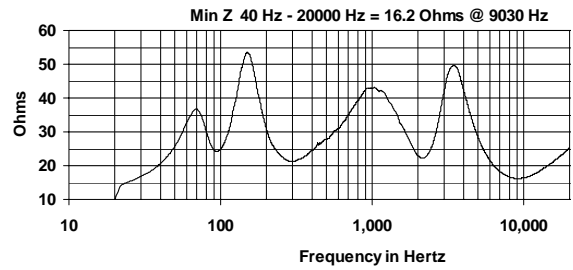
R.25-94TZ

TWO-WAY, FULL-RANGE, 200W (70/100V)
WEATHER-RESISTANT LOUDSPEAKER

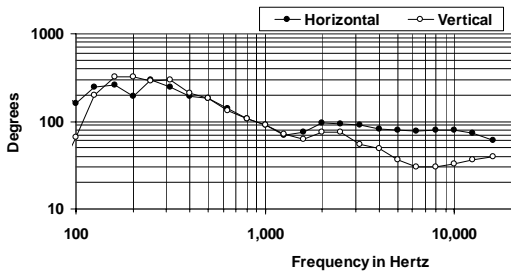
FREQUENCY RESPONSE



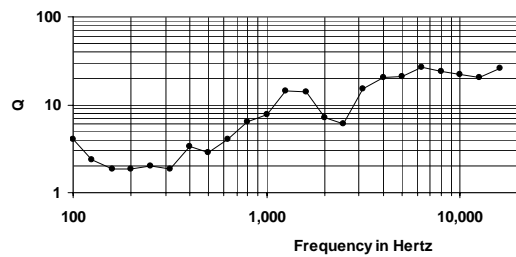
200W IMPEDANCE



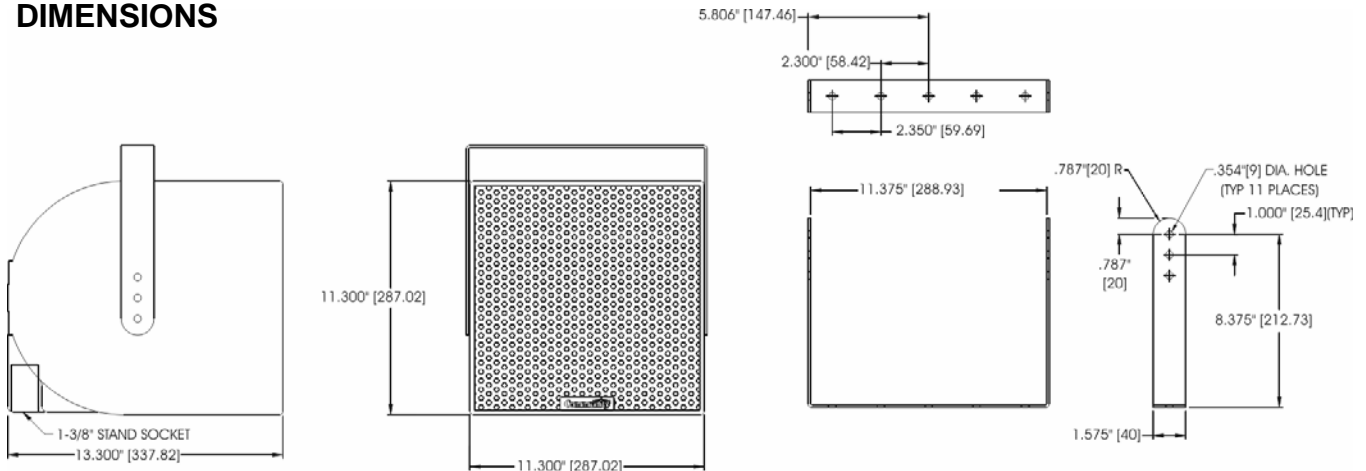
BEAMWIDTH



AXIAL Q



DIMENSIONS



ARCHITECTURAL SPECIFICATIONS

The loudspeaker system shall be a two-way, full-range bass reflex design with a single cast 8" and one 3/4" exit HF driver coaxially mounted on a 90° x 40° horn. Drivers shall be connected to an integral crossover with a crossover frequency of 2 kHz with driver protection using DYNA-TECH active protection circuitry. The cabinet shall be a rotomolded polyethylene enclosure providing weather and UV resistance with a three-layer weather resistant grille. The input connection shall be one 12' (4m) SJOW #16-gauge cable with stripped ends. The enclosure shall incorporate five M8 rigging points for multiple mounting options. In addition, the loudspeaker will be supplied with one stainless steel yoke bracket. The system shall have an amplitude response of 160 Hz - 13 kHz (+/- 3 dB), input capability of 200W (70V/100V), 96 dB Sensitivity at one meter and 2.83V between 250 Hz to 4 kHz at a nominal 8 Ohm impedance. The nominal dispersion shall be 90° H x 40° V from 2 kHz to 10 kHz. The dimensions of the enclosure are defined as 11.3" x 11.3" x 13.3" (HWD) at a weight of 23 lbs.

Community strives to improve its products on a continual basis. Specifications are therefore subject to change without notice.



Community Professional Loudspeakers, 333 East Fifth Street, Chester, PA 19013-4511 USA
610-876-3400 | Fax 610-874-0190 | info@loudspeakers.net | www.loudspeakers.net