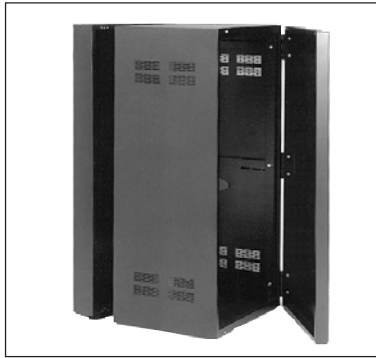




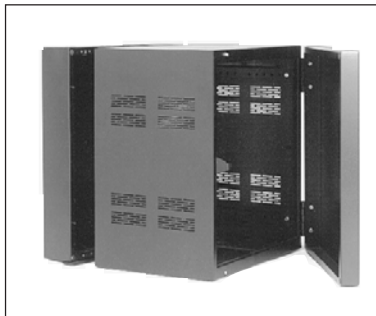
SECTIONAL WALL CABINETS

Standard Series 19" Wall Cabinets

300 Series Racks



324-12



324-15

FEATURES

- Sturdy wall-mount cabinet protects equipment and saves valuable floor space
- Selection includes models with 12" and 15" deep center mounting sections
- Reinforced frame flanges, plus corner-brace structural supports and electric-welded seams & miters provide stability for mounted equipment
- Punched vents assure heat dissipation
- Wire management provisions allow organized wire access
- Adjustable mounting rails provide flexibility
- New cutout on rear section on all models except 7 RU and 10 RU

APPLICATIONS

The 300 Series cabinets have been engineered to provide full functional and mechanical flexibility for wall-mounting standard 19" wide rack equipment. Sectional assemblies may be installed to accommodate right or left-hand hinging applications, and are ideal for use in areas with limited floor space or "protected" access requirements. Units are commonly used to house electronic switching, monitoring, sound, and communication controls in school auditoriums, health care facilities, presentation/conference centers, manufacturing facilities, laboratories, public buildings, and recreational complexes. They can also be used to house computer control equipment, studio electronics, and building management/security systems in commercial, industrial, institutional, and military applications.

W/DOOR	PANEL OPENING*	CABINET O.D.		SECTION DEPTH	
12" CTR MODELS		WIDTH	HEIGHT	REAR	CENTER
307-12	12 $\frac{3}{8}$ " (7 RU)	20 $\frac{3}{8}$ "	15 $\frac{1}{4}$ "	4 $\frac{1}{2}$ "	12"
310-12	17 $\frac{1}{2}$ " (10 RU)		20 $\frac{1}{2}$ "		
312-12	21 $\frac{1}{8}$ " (12 RU)		24"		
316-12	28 $\frac{1}{8}$ " (16 RU)		31"		
324-12	42 $\frac{1}{8}$ " (24 RU)		45"		
15" CTR MODELS		WIDTH	HEIGHT	REAR	CENTER
310-15	17 $\frac{1}{2}$ " (10 RU)	20 $\frac{3}{8}$ "	20 $\frac{1}{2}$ "	4 $\frac{1}{2}$ "	15"
312-15	21 $\frac{1}{8}$ " (12 RU)		24"		
316-15	28 $\frac{1}{8}$ " (16 RU)		31"		
324-15	42 $\frac{1}{8}$ " (24 RU)		45"		
335-15	61 $\frac{1}{8}$ " (35 RU)		64 $\frac{1}{4}$ "		

* Listed panel opening allows $\frac{1}{8}$ " clearance at top and bottom ($\frac{1}{8}$ total)

Specifications subject to change without notice



1601 JACK MCKAY BLVD. / ENNIS, TEXAS 75119 U.S.A.
 TELEPHONE: (800) 876-3333 / FAX (800) 765-3435

AtlasSound.com

TEN

399

Fig. 1: Rear Section Mounting Holes Knockouts
(Note: -61 Models have 8 mounting holes)

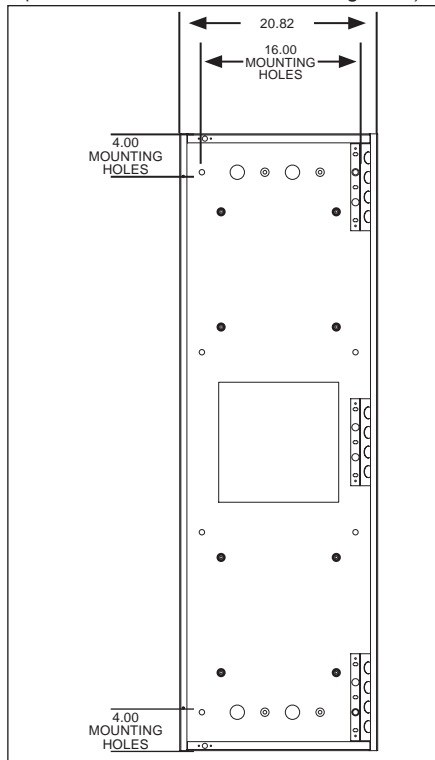
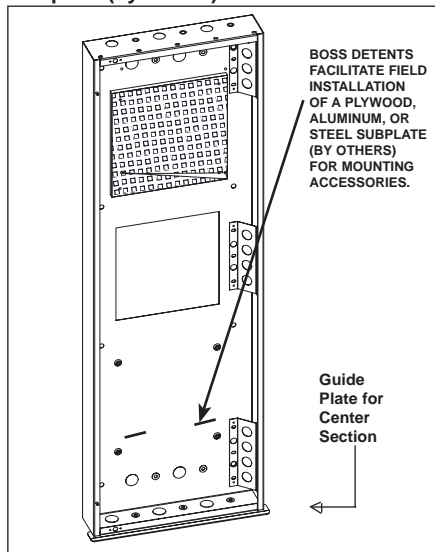


Fig. 2: Rear Section Featuring Optional Subplate (by others) and Guide Plate



GENERAL DESCRIPTION

The 300 Series wall cabinets are distinguished by center-section depths of 12" and 15", respectively. Basic model includes three, 16-gauge CRS sections which include a 2" deep, solid-steel front door, a 12" or 15" deep center section with adjustable mounting rails, and a 4½" deep rear door. Panel space openings range from 7 RU to 35 RU (depending on series - see chart on page 1). Enclosures are equipped with convenient and useful provisions for custom cabinet mounting, wire management, equipment mounting, and structural support (see below for detailed information). Cabinet is finished in #962 black epoxy.

Mounting Provisions

Mounting holes, located on the back panel of the rear door, enable the pre-assembled cabinet to be easily secured to a wall, post, support, or other surfaces for elevated applications (see Fig.1) These convenient cabinets are designed for right-hand hinging applications, but assemblies can be inverted 180° to facilitate left-hand hinging. Rear section hinges are bolted, not welded, to ensure easy retrofit capability. The removable pin-type hinges holding the center and rear sections together facilitate independent pre-installation of the rear section. This feature also permits efficient surface or recess installation. Models with panel heights of 7 RU, 10 RU and 12 RU have two hinges, while 16 RU, 24 RU and 35 RU panel space cabinets each have three hinges. Rear sections are now equipped with a 12½" x 12½" square cutout (12 RU, 16 RU, 24 RU and 35 RU panel height models).

Equipment Mounting & Wiring

All models include one pair of 11-ga. adjustable front-to-rear mounting rails which are tapped 10-32, and manufactured to standard E.I.A. 5/8"-5/8"-1/2" spacing. Models with panel space openings of 16 RU, 24 RU and 35 RU are equipped with center section mounting rail supports (1 per side) which have slotted cutouts for infinite mounting rail adjustments and open raceways to hold vertically run wire and cable. Smaller models do not require mounting rail supports. Corner brace supports, which straddle the back and side panel of the rear section (hinge side), also feature round (1¼" dia.) wire access holes for harnessing excess wire. The back panel of the rear section is equipped with ¼" deep boss detents which give contractors field flexibility to screw-mount a plywood, aluminum, or steel subplate (not made by Atlas) for mounting accessories such as transformers, power strips, and phone relay systems inside the cabinet. Boss detents are on 12" centers and vary depending upon model height (10 RU, 12 RU and 16 RU panel space models have four detents 2 RU panel space models have six detents and 35 RU panel space models have eight detents (see Fig. 2). Note: Model 307-12 does not have provisions for mounting subplate.

Conduit Knockouts

The 300 Series models have 20 conduit knockouts on the rear section, with the exception of the 307-12 which has 16. Conduit arrays are located at the top and bottom of the back panel (except 307-12 which has a centered array), as well as on the top and bottom back flanges. Panel arrays consist of four knockouts: two 1" (25mm) standard and two ½" (13mm) / ¾" (19mm) concentric. Top and bottom flange arrays are comprised of six knockouts: three 1" (25mm) standard and three ½" (13mm) / ¾" (19mm) (See Fig. 3).

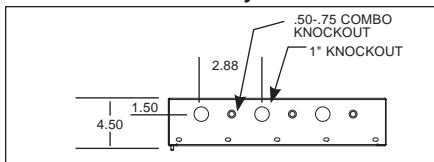
Specifications subject to change without notice



1601 JACK MCKAY BLVD. / ENNIS, TEXAS 75119 U.S.A.
TELEPHONE: (800) 876-3333 / FAX (800) 765-3435

AtlasSound.com

Fig. 3: Rear Section Top & Bottom Flange Conduit Knockout Array



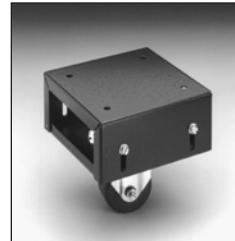
Ventilation

Stamped perforated vents, located on both sides (top and bottom) of the center section, provide maximum ventilation for rack-mounted electronics (four vent patterns per side on 12" deep series, eight per side on 15" deep.)

Structural Support

Series 300 cabinets offer exceptional structural support. The units' one-piece front and rear sections are strengthened with frame flanges on bottom, top, and sides. Center sections also have "L"-shaped gussets (brackets) which are plug-welded, joining bottom and top panels to side panels. Series 3xx-12 and 3xx-15 have a total of 8 & 12 brackets, respectively. Rear sections have corner brace supports which bridge the back and side panel (hinge side) giving the back (mounted) panel extra reinforcement for tension relief (see Fig. 3). Units also have electric-welded seams and miters which bolster the cabinets' overall bonding. The center section offers maximum reinforcement provisions, such as a uniquely designed center section guide plate that reduces potential sagging by distributing cabinet and equipment weight to rear section. The 11-ga., 1-7/8" wide guide plate, which mounts to the rear section's bottom flange, provides a 3/8" lip for added support to the center section when the cabinet is open or closed. The plate also ensures that an equipment-weighted center section will close properly, by "guiding" alignment pins into respective holes.

CT31A. This optional heavy-duty caster support reduces the load bearing requirements of the wall by supporting the center section weight when opened and closed (typically used on 35 RU panel space models). Cabinet must be mounted 6" from the ground. Support is constructed of formed, 14-ga. CRS and includes heavy-duty, zinc-plated caster with a black, hard-tread wheel. The caster adjusts in height from 5 1/2" to 7 1/2" and is supplied with drilling template for easy installation. Finished in black (*Note: before installing the CT31A, the center section guide plate must be removed*) (*Only one CT31A required per cabinet*).



ARCHITECT AND ENGINEER SPECIFICATIONS

The sectional wall mounting cabinet shall be Atlas Sound Model _____. It shall be constructed of 16-gauge CRS throughout. Hinges shall be bolted, not welded. All sections shall be of one-piece construction with electric-welded seams and miters. Cabinet shall have provisions which allow the unit to be inverted for accommodating left-hand hinging applications. Rear section shall have concentric 1/2" (13mm) and 3/4" (19mm) knockouts on the top and bottom surface panel, as well as the flange panels at the top and bottom of the rear panel.

Center section shall be secured with screw-type locking rods and alignment pins. The center section shall be equipped with adjustable, front-to-rear mounting rails tapped with 10-32 holes on E.I.A. 19" spacing. Units shall have slotted rail supports for mounting rail adjustment and wire management purposes. Standard front door shall be 2" (51mm) deep, and constructed of one-piece 16-ga. CRS, with perforation vents and cylinder lock.

Specifications subject to change without notice



1601 JACK MCKAY BLVD. / ENNIS, TEXAS 75119 U.S.A.
 TELEPHONE: (800) 876-3333 / FAX (800) 765-3435

AtlasSound.com

INSTALLATION

Fig. 5: Minimum mounting space required to facilitate opening center section 90° with front door open.

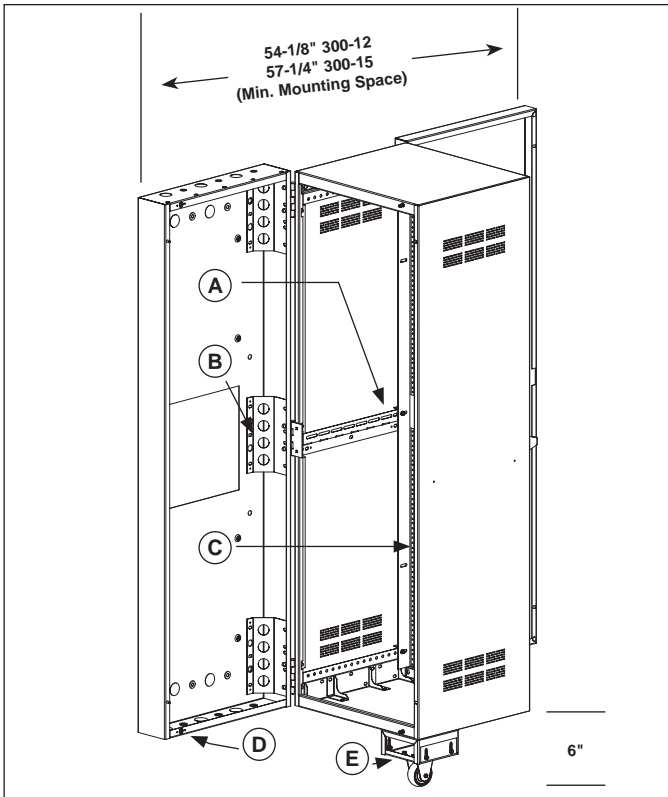
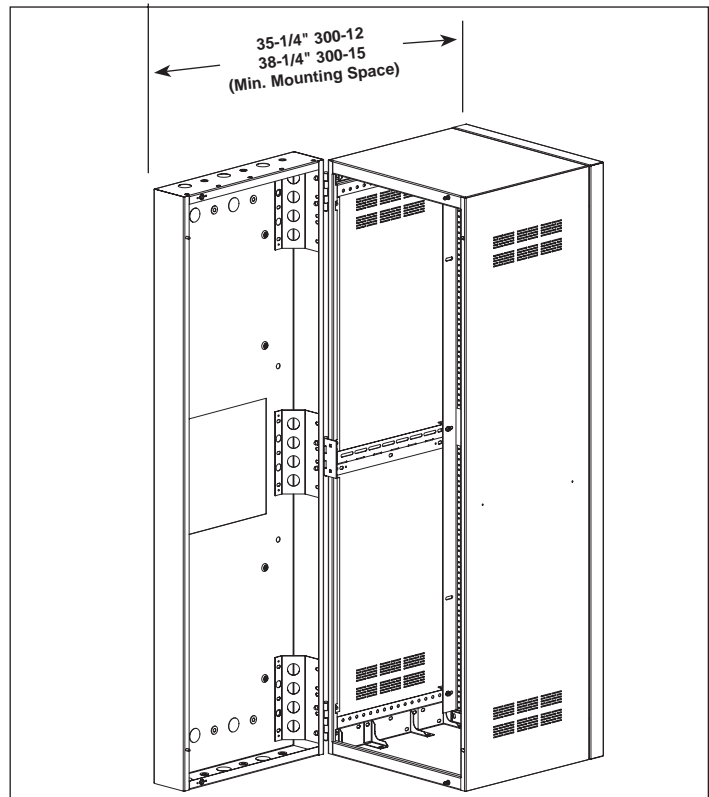


Fig. 6: Minimum mounting space required to facilitate opening center section 90° with front door closed.



- A) Mounting Rail Supports
- B) Corner Brace Supports
- C) Adjustable Front-to-Back Mounting Rails
(Standard E.I.A. Spacing)
- D) Center Section Guide Plate
- E) Optional Model CT31A Caster Support
(Requires the cabinet to be mounted 6" from the floor.)

Installation Placement Considerations

- Determine left/right swing distance to adjacent walls.
- Decide if optional caster support Model CT31A will be used to reduce wall load-bearing requirements (recommended on 35 RU and some 24 RU panel space cabinet installations). If the caster will be used, cabinet must be mounted 6" from the floor.

Specifications subject to change without notice



1601 JACK MCKAY BLVD. / ENNIS, TEXAS 75119 U.S.A.
TELEPHONE: (800) 876-3333 / FAX (800) 765-3435

AtlasSound.com