

## Features

- Vandal-resistant grille provides protection in areas where vandalism and abuse are likely to occur while allowing clear and accurate sound projection.
- Formed of rugged cast aluminum with a stainless steel barrier screen.
- Screw mounts to Unihorn™ LUH-15T trim ring using tamper-resistant stainless steel screws.

## Description

Lowell grille Model LUH-VRG is a rugged cast aluminum grille with a secondary stainless steel barrier screen to protect Lowell's Unihorn™ Model LUH-15T from damage in applications where vandalism and abuse are a concern. It is ideal for installation in detention and correctional facilities, schools, hospitals, transportation terminals, as well as manufacturing and distribution centers.

Vandal-resistant round grille measures 8.02" Dia. and is cast-aluminum construction to withstand damage and abuse. It is additionally engineered with a stainless steel barrier screen (painted Network Grey) to prevent damage to the horn from pointed objects.

The grille casting includes holes to mount directly to the 9.6" Dia. trim ring of Lowell's Unihorn™ Model LUH-15T. Mounting hardware includes four tamper-resistant stainless steel spanner screws for mounting the grille directly to the trim ring included with the Unihorn™ LUH-15T. The grille is finished in Network Grey powder epoxy for long lasting quality appearance and to match the Unihorn™.

## A & E Specifications

The tamper-resistant grille for Lowell Unihorn Model LUH-15T shall be Lowell Model LUH-VRG. It shall be heavy duty cast aluminum with a stainless steel barrier screen to protect the horn from damage. The grille shall be round and measure 8.02" Dia. with a mounting projection of 0.78". It shall include stainless steel spanner screws for mounting to the trim ring of Unihorn Model LUH-15T. Grille shall be finished in Network Grey powder epoxy. Companion backbox (if required) shall be Lowell Model LUH-BOX for recessed or surface use. For recessed installation Lowell Model LUH-TP trim plate shall be used to cover the rough opening.



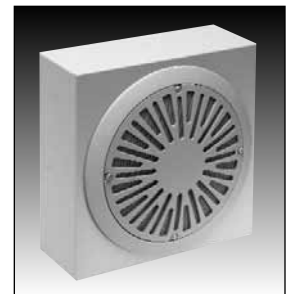
**LUH-VRG**

Stainless steel tamper-resistant grille.



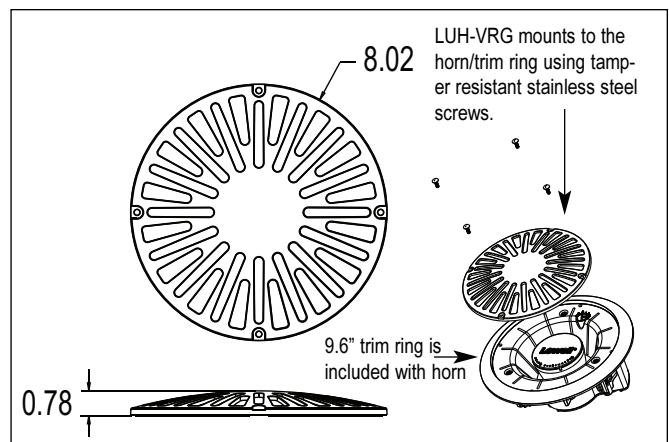
**LUH-BOX + Perf Grille**

Shown with mounted LUH-15T Horn and perforated grille included with horn.



**LUH-BOX + LUH-VRG Grille**

Shown with mounted LUH-15T horn. LUH-VRG replaces the horn's perforated grille.



**LUH-VRG Dimensions**

## Grille Specifications

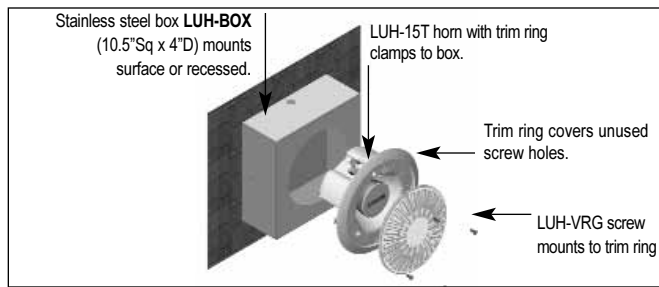
Model	Description	Material	Dimensions	Mounts Speaker (order separately)
LUH-VRG	Tamper-resistant grille	Cast alum w stainless steel screen	8.02" Dia. x 0.78" D	LUH-15T Unihorn™



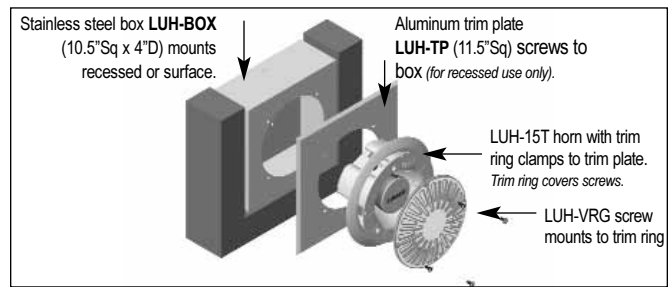
**LUH-VRG**

Vandal-resistant Grille for Unihorn™ Model LUH-15T

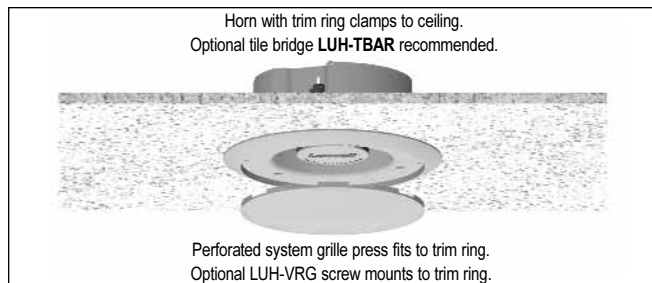
**Installation Options**



**Surface Wall installation**  
Shown with LUH-BOX, LUH-15T horn and LUH-VRG.



**Recessed Installation**  
Shown with LUH-BOX, LUH-15T horn and LUH-VRG.

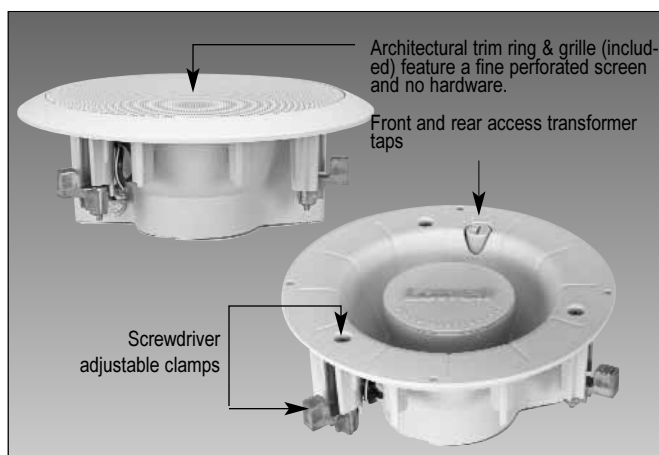


**Recessed Ceiling Installation**  
Shown with LUH-15T horn, supplied perf grille or optional LUH-VRG grille.

**UNI HORN™ Installation Methods/Accessories for clamp-mounting** (order accessories separately)

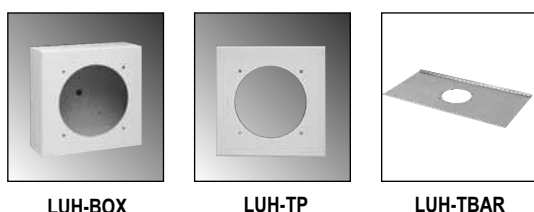
GRILLE	BACKBOX	+	T-BRIDGE
Horn ONLY (No Grille) Discard supplied Trim Ring/Grille	No backbox.....		LUH-TBAR (recommended for acoustic tile ceilings)
Horn with Supplied Perf Grille/Trim Ring (alum) 9.6" Dia. Trim Ring	LUH-BOX (recessed) + LUH-TP trim plate.....	N.A.	
	LUHBOX (surface).....	N.A.	
Horn with Optional LUH-VRG Grille (vandal-resistant, mounts trim ring supplied with horn)	LUH-BOX (recessed) + LUH-TP trim plate.....	N.A.	
	LUHBOX (surface).....	N.A.	

**Companion Accessories (order separately)**



**UNI HORN™ LUH-15T - 15W 70/25V Package**  
Includes perforated grille and trim ring.

Model	Description
LUH-15T	15W Unihorn 3.72"D + trim ring and grille



Model	Description	Size	Material	Color
<b>Optional UNI HORN™ - accessories for clamp-mounting (see above)</b>				
LUH-BOX	Backbox-recessed or surface	10.5Sq x 4D	StainlessSteel	Network Grey
LUH-TP	Trim plate for recess LUH-BOX	11.5Sq	Alum	Network Grey
LUH-TBAR	T-bridge for LUH15T	23.75L	Steel	Galvanized

**AUDIO**

**12"/10"**  
Speakers & Accessories

**8"**  
Speakers & Accessories

**6"**  
Speakers & Accessories

**4"**  
Speakers & Accessories

**Horn**  
Speakers & Accessories

**Masking**  
Speakers & Generators

**Control**  
Accessories & Electronics

Grilles & Backboxes