

#132CLBK SUPER STAGE POCKETS



THE SUPER POCKET is the same size as the ACE Full Pocket with Back Box except it provides almost 3 times the connectivity capacity using a HORIZONTAL PANEL design. The basic construction incorporates 3 sub-assemblies. A unique Bezel-Lid assembly

with spring loaded blind hinge pins and hinged cableway slot closure that mounts directly to the ACE #102BBX Back Box. Assembled in the Back Box is a set of panel mounting and AC barrier isolation raceway brackets. The Bezel-Lid is a heavy duty welded 11 gauge (.120 thick) steel, solid brass or solid stainless steel assembly. Each Bezel is available with either a flat flush standard lid (SL) or a recessed carpet lid (CL). Steel Bezels with flush flat lids come in 3 oven cured powder coat decorator finishes: antique silver vein, antique copper vein or textured black. Solid Brass and Stainless Steel have a brushed finish and are available on a special order basis. The in-floor appearance is the same as the Full Pocket.

The HORIZONTAL PANEL in the SUPER POCKET is designed for high capacity connectivity. In less than one square foot (10.5" x 10.5") the SUPER POCKET provides abundant panel space for up to 25 connectors* and a barrier isolated raceway ready for 2 duplex electric outlets (multiple circuits). The Super Stage Pocket will mount (2) optional ACE #PNL-1212 Panels (Each Panel will mount 12 "Connectrix" Connectors for a possible 24 "Connectrix" Connectors (24 sq. in. panel area each) or (4) ACE #PNL-106 Panels (which will also mount 6 "Connectrix" Connectors each (11 sq. in. panel area each - 6 Connectors each for a possible 24 "Connectrix" Connectors) or (1) ACE #PNL-1425 Panel which will mount 25 "Connectrix" Connectors (47.04 sq. in. panel area).

Generous combination conduit knockouts on four sides provide in-out-and-thru ways for both low voltage and AC electric cabling. The SUPER POCKET panel system is unique and flexible. Use any combination of standard ACE prefabricated panels designed for the Full and/or Half Pockets, or choose a custom layout made to order aluminum "connectrix" or alumi-lam panel. Generous clearances above and below the panel(s) permit easy termination and access to an array of audio, video, data, communication and control connections. The SUPER POCKET and ACE value added to its custom panel layouts, machining, engraving and assembly makes high capacity connectivity easy and economical.

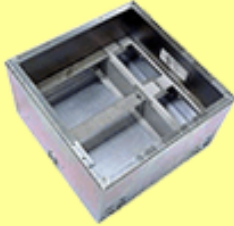
Ace Backstage Co.'s Super Horizontal Panel Stage Pocket Systems offer "Connectivity" Solutions with a flexible, reliable, and simplistic design. The flexible design of the Super Horizontal Panel Stage Pockets Trim Bezel and Lid Assemblies, Custom and Prefabricated Aluminum "Connectrix" Panels, and large selection of "Connectrix" Connectors allow the Stage Pockets to be installed in many different applications, including audio, communications, data, electric, video, and voice terminations. Ace Backstage Co.'s Super Horizontal Panel Stage Pockets feature welded heavy duty steel construction, choice of 3 decorator oven cured powder coat finishes for the detachable trim bezel and mounting flange, 2 lid choices (Standard and Carpet), plus solid brass or solid stainless steel trim bezel and mounting flange lid assembly finishes. Add a host of stock prefabricated or custom audio, communications, data, electric, video, and voice panels and connectors for a complete Stage Pocket System.

Ace Backstage Co.'s Super Horizontal Panel Stage Pockets are available in a variety of sizes (Super and Super Double Wide Stage Pockets) making them flexible in both form and function and able to meet your individual requirements. All Super Horizontal Panel Stage Pockets are UL Listed. For more details on Ace Backstage Co.'s Stage Pocket Systems call the Ace Order Desk at 661-295-5760. Listed below are Ace Backstage Co.'s Super Horizontal Panel Stage Pockets. For more details on any of the specific Stage Pockets, please click on the links listed below. For more information on Ace Backstage Co.'s other Stage Pockets, click on [Vertical Slant Panel Stage Pockets](#) or [Super Horizontal Panel Stage Pockets](#).

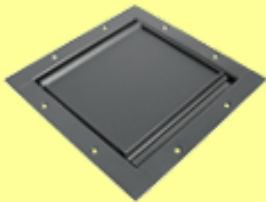
*Connector capacity limitations apply depending on connectors used. Use of #PCU-140, #PNL-140, or #PNL-1425 requires that the Super Pocket center "Break-out" bar be removed.

MODEL #**#132CLBK****POCKET
IMAGE****STAGE POCKET DESCRIPTION:**

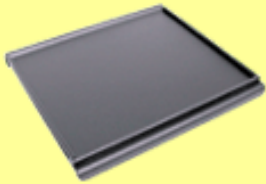
#132CLBK Super Stage Pocket with Textured Black Powder Coat Finish Stage Pocket Trim Bezel and Mounting Flange and Black Powder Coat Finish Carpet Lid. #132CLBK Stage Pocket has a 14 ga. (.071" thick) Sheet Steel CRS Super Pocket Back Box (#BRK102BBX) and an 11 ga. (.120" thick) Steel Lid and Mounting Flange. Removable Spring Loaded Hinge Pins permit easy exchange of Lids for Standard and Locking Lids. Rubber Lid stops cradle lid to prevent lid rattle.

**POCKET
BACK BOX****SUPER STAGE POCKET BACK BOX DESCRIPTION:**

Standard Super Stage Pocket Back Box #BRK102BBX is made of 14 Gauge Sheet Steel CRS (.071" thick) and comes with a clear Zinc finish and a precision die formed and jig welded fabrication. The Super Pocket Back Box includes the preinstalled #BRK102 Bracket Kit Assembly.

**POCKET
TRIM BEZEL****SUPER STAGE POCKET TRIM BEZEL DESCRIPTION:**

#BZ132CLBK Standard Super Stage Pocket Trim Bezel Mounting Flange and Recessed Carpet Flush Hinged Lid assembly are made of 11 Gauge Steel (.120" thick) and both come with a Textured Black Powder Coat finish. Click on [Super Stage Pocket Trim Bezel Lid Assemblies](#) to view all versions.

**POCKET
LID IMAGE****SUPER STAGE POCKET LID DESCRIPTION:**

#002CLBK Standard Super Stage Pocket Recessed Carpet Flush Hinged Lid with Black Powder Coat Textured Finish. The Recessed Carpet Flush Hinged Lid assembly fits flush on top of the Super Stage Pocket Back Box. A piece of carpet is placed on top of the Carpet Lid and is glued in place. Note that the Carpet Lid has a 5/32" raised "Trim Lip" to help secure the carpet in place. Click on [Super Stage Pocket Lid Styles](#) to view all versions.

**PANEL
CAPACITY****SUPER STAGE POCKET PANEL CAPACITY:**

Standard Super Stage Pocket #132CLBK accepts either (4) #PCU-100 Series or (4) #PNL-100 Series or (4) #PSW-100 Series or (2) #PCU-120 Series or (2) #PNL-120 Series or (1) #PCU-140 Series or (1) #PNL-1425 Series Panels. The Super Stage Pocket also includes a barrier isolated raceway for (2) Duplex Electric Outlets. Click on [Stock Super Stage Pocket Panels and Panel Configurations](#) to view all Panels that will mount in the Super Stage Pocket.

**CONNECTOR
CAPACITY****SUPER STAGE POCKET CONNECTOR CAPACITY:**

Standard Super Stage Pocket #132CLBK has the Capacity to mount up to 25* "Connectrix" Connectors. Click on [Stock "Connectrix" Connectors](#) to view all versions.

**POCKET
HARDWARE****SUPER STAGE POCKET INCLUDED HARDWARE:**

Standard Super Stage Pocket #132CLBK includes (1) Super Stage Pocket Back Box with Bracket Kit Assembly, (1) Super Stage Pocket Trim Bezel Mounting Flange and Slot Closure with Black Powder Coat Finish, (1) Carpet Lid with Black Powder Coat Finish, (8) #8 Black Coated Self Tapping Sheet Metal/Wood Screws, (2) Hinge Pins, and (2) Springs. Click on [Super Stage Pocket Hardware](#) to view all hardware.

INSTALL DIMENSIONS



SUPER STAGE POCKET INSTALL DIMENSIONS:

Standard Super Stage Pocket #132CLBK Installation Dimensions can be viewed online or downloaded as a PDF File. Click on [Super Stage Pocket Installation Dimensions](#) to view online or [Download as a PDF File](#).

POCKET SPECS



SUPER STAGE POCKET SPECIFICATIONS:

Standard Super Stage Pocket #132CLBK Specifications can be viewed online or downloaded as a PDF File. Click on [Super Stage Pocket Specifications](#) to view online or [Download as a PDF File](#).

SUPER STAGE POCKET INSTALLATION IMAGES

