

Technical Manual



JBL ASB6118-WH

SPECIFICATIONS

ACOUSTIC & ELECTRICAL SPECIFICATIONS:

- Nominal Impedance: 8 ohms
- Power Capacity (AES): 1200 W (4800 W Peak), 2 Hrs
- Long Term: 800 W (3200 W Peak), 100 Hrs
- Frequency Range: 28Hz – 1 kHz (–10dB)
- Sensitivity: 30 Hz – 100 Hz, 98dB, (1 W at 1 M)
100 Hz – 500 Hz, 98dB

SYSTEM COMPONENTS:

- Cabinet: Enclosure (Not For Sale)
- Grille: 338163-009, 338163-109 Wh
- Low Frequency Transducer: 460mm (18 in.) SVCT™ Drivers With 100mm (4 in.) Voice Coil (2242HPL)
- DC Resistance: 4.7 ohm ±10% Aluminum Wire
- Terminal Cup: 339336-001

AURAL SWEEP TEST SPECIFICATIONS:

- A. System Aural Sweep Test: 10.0V Input, 20 Hz to 1.2 kHz
- B. L.F. Aural Sweep Test: 10.0V Input, 20 Hz to 1.2 kHz

PHYSICAL SPECIFICATIONS:

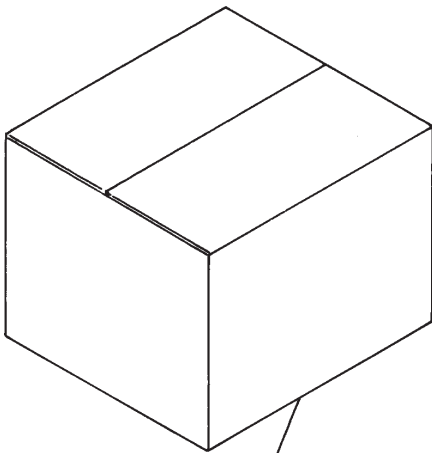
- Enclosure Dimensions: 548mm x 561mm x 816mm D
(21.6 x 22.1 x 32.2 in.D.)
- Net Weight: 98 lbs. (44.5 kg.)

WARRANTY INFORMATION:

- Refer to Warranty Statement packed with each product.

PACKAGE

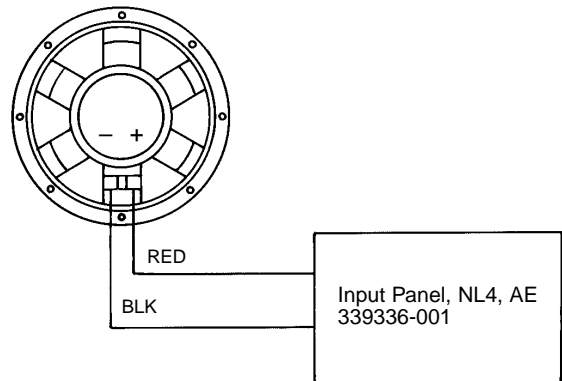
Warranty 59660
Installation Data Sheet
339390-023



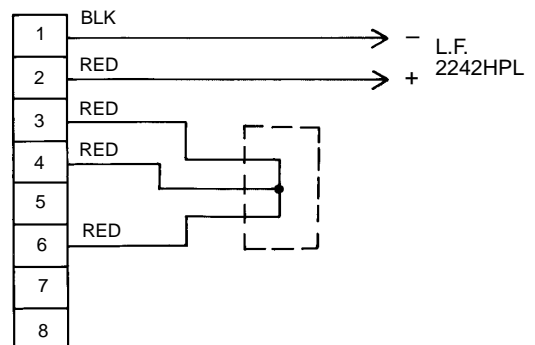
- Carton 339368-001
- Filler (2) 339369-001
- Logo, Grille Assy (Large) 339399-001
- Sticker, JBL 337638-001
- Micro Foam (8) 49790P
- Hardware Kit, SP/VS 229-00009-01
- ACC, Not Included

WIRING DIAGRAM

Driver, Low Freq
2242HPL
Cone Repl
C8R2242



SCHEMATIC DIAGRAM



JBL ASB6118-WH

COMPONENT EXPLODED VIEW

Input Plate, NL4, AE
339336-001
Input Plate Label, NL4, AE
339338-002
Model Label, ASB8118
339339-020

Screw (12)
352051-001 (BLK)
352051-002 (WH)
M10 x 25MM
SCKT HEX ZINC

Enclosure Assy
(Not for Sale)

T-Nut (8)
61861
10-32

Gasket (4)
339431-001

LF Wire Assy
(Single)
339422-001

Screw (6)
882-41110-10
6 x 5/8, PAN, PH,
PB, BLK

Driver, Low Freq
2242HPL
Cone Repl
C8R2242

Tinsel Leads (2)
352828-001

Input Terminals
362-10007-01

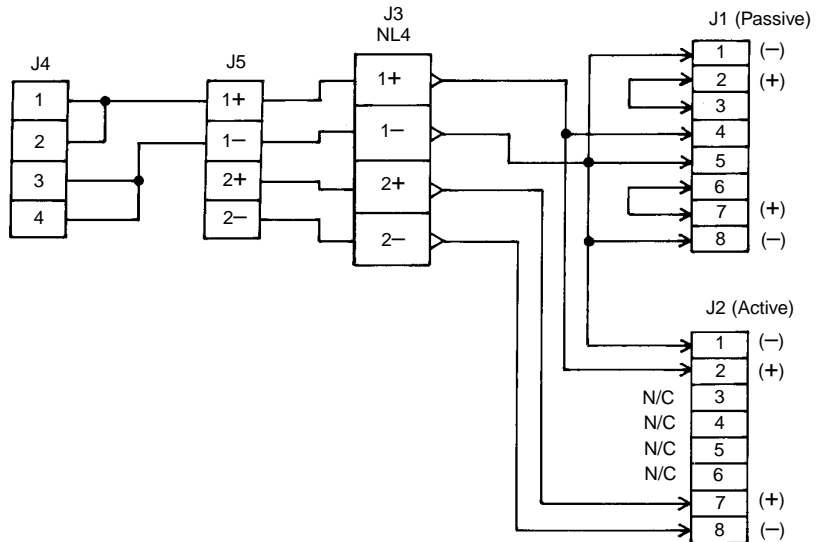
Screw (8)
804-01110-16
10-32 x 1
FIL PH BLK ZINC

Grille,
338163-009
338163-109 Wh

Screw (8)
882-51110-12
6 x 3/4
OV PH

Logo, Grille Assy
(Large), AE
339400-001
Push Nut
350689-001
7/16"
Washer
76168
.175 ID, .75 OD
Compression Spring
350690-001

ELECTRICAL SCHEMATIC



NOTE: BLACK DURAFLEX REPAIR KIT
30052
WHITE DURAFLEX REPAIR KIT
16679