

MODEL UA505 REMOTE ANTENNA MOUNTING BRACKET KIT

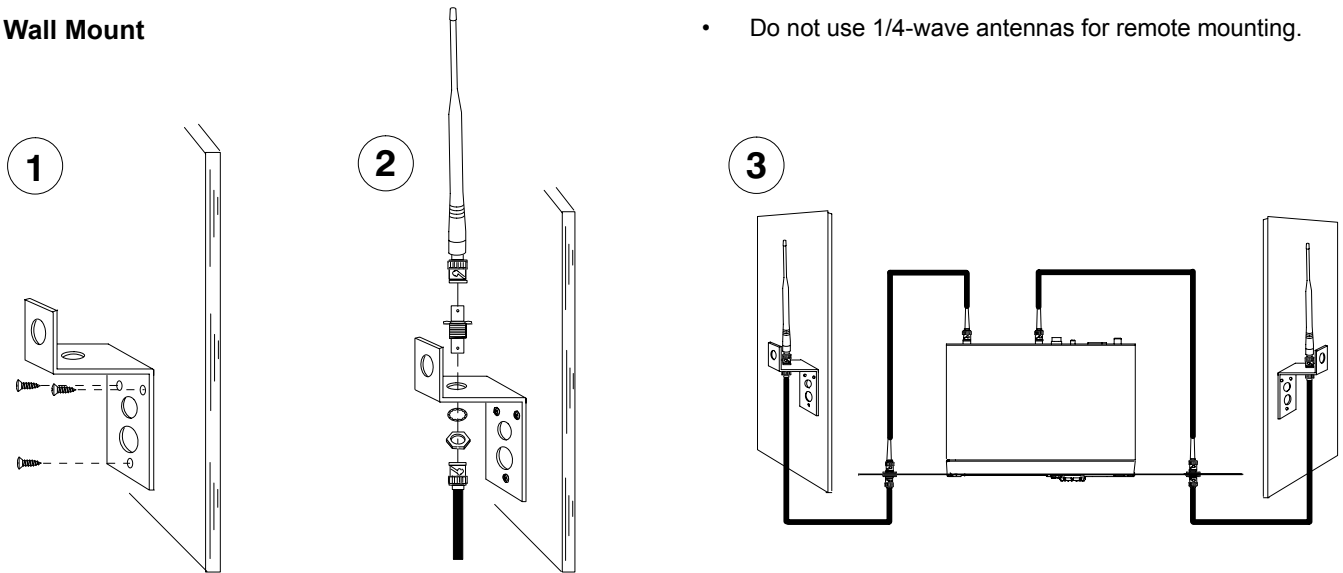
The Shure UA505 Remote Antenna Mounting Bracket Kit lets you mount a 1/2-wave antenna away from the receiver or equipment rack. This kit includes one mounting bracket, a bulkhead adapter, and bulkhead adapter nut.

Note: Antennas and bracket mounting hardware (screws, washers and nuts) are not included in this kit.

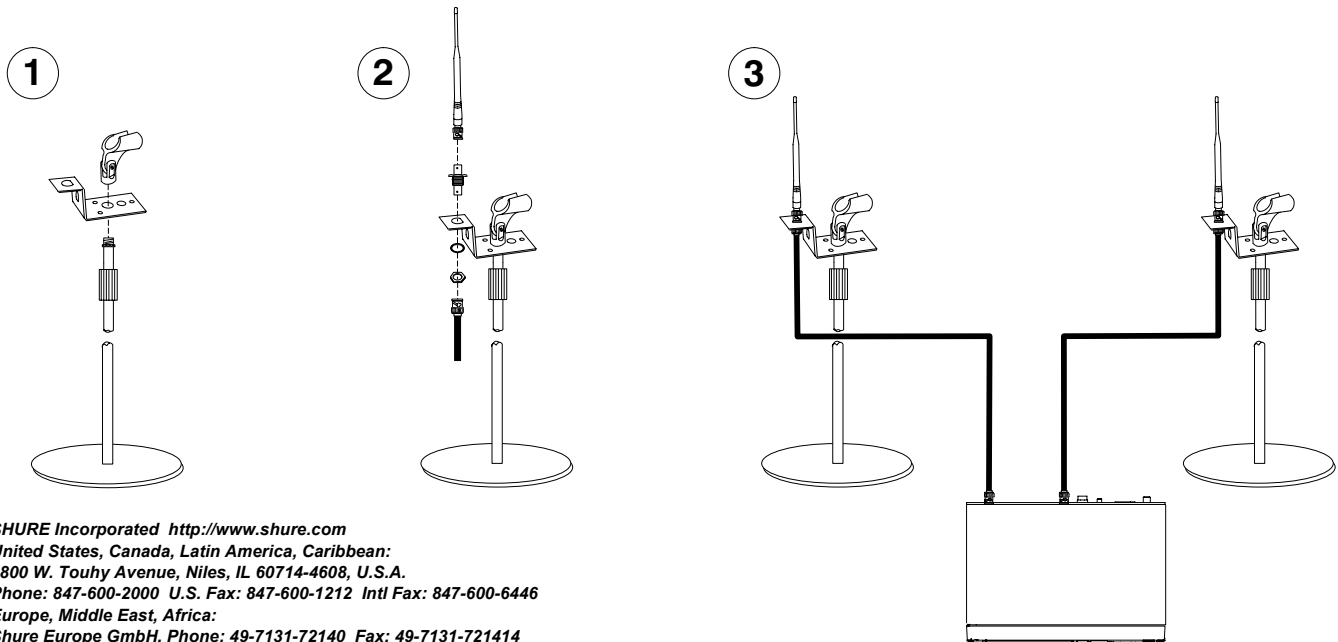
Antenna Placement

- Place antennas as high as possible and away from metal obstructions.
- Placing the antenna behind non-metallic curtains or stage flats is acceptable.
- Keep antennas separated by at least one wave length.
- Make sure the person using the transmitter can see the receiver antenna at all the times.
- Use RG-8U or equivalent 50 Ω low-loss cable such as a Shure UA825 or UA850.
- Do not use 1/4-wave antennas for remote mounting.

Wall Mount



Microphone Stand Mount



SHURE Incorporated <http://www.shure.com>
United States, Canada, Latin America, Caribbean:
5800 W. Touhy Avenue, Niles, IL 60714-4608, U.S.A.
Phone: 847-600-2000 U.S. Fax: 847-600-1212 Intl Fax: 847-600-6446
Europe, Middle East, Africa:
Shure Europe GmbH, Phone: 49-7131-72140 Fax: 49-7131-721414
Asia, Pacific:
Shure Asia Limited, Phone: 852-2893-4290 Fax: 852-2893-4055

