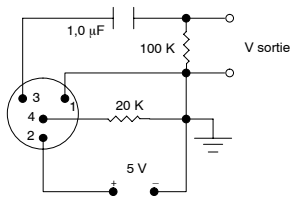


ENGLISH

SPECIFICATIONS	WB98H/C Microphone (with standard test circuit shown in Figure 1)	BETA 98H/C Microphone (with preamplifier)
Type	Condenser (electret bias)	
Polar Pattern	Unidirectional (cardioid). See Figure 2.	
Frequency Response	20 to 20,000 Hz. See Figure 3.	
Output Impedance	1200 Ω	Rated at 150.0 Ω (actual) Recommended minimum load impedance: 1 k Ω May be used with loads as low as 150 Ω with reduced clipping level)
Output Level (0 dB = 1 volt per Pascal)	Open Circuit Voltage: -56.5 dB (1.5 mV)	Open Circuit Voltage: -56 dB (1.6 mV)
Output Clipping Level (at 1kHz, THD < 1%)	-9 dBV (0.35 V)	2.5 k Ω load 11 dBV (3.5 V) 1.0 k Ω load 3 dBV (1.4 V)
Maximum SPL	143.5 dB	2.5 k Ω load 163 dB 1.0 k Ω load 155 dB

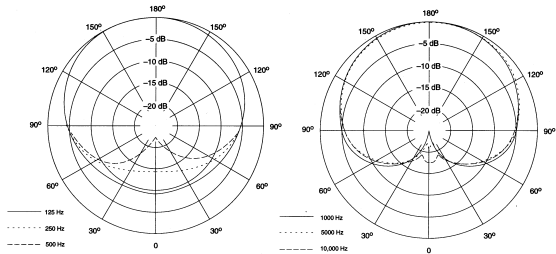
ENGLISH

SPECIFICATIONS	WB98H/C Microphone (with standard test circuit shown in Figure 1)	BETA 98H/C Microphone (with preamplifier)
Dynamic Range (maximum SPL to A-weighted noise level)	112.5 dB	132 dB (2.5 kΩ load)
Output Noise (equivalent SPL)	31 dB typical, A-weighted	
Signal-to-noise ratio	63 dB at 94 dB SPL (IEC 651)	
Polarity	Positive pressure on microphone diaphragm produces positive voltage on pins 3 and 4 with respect to pin 1 (ground).	Positive pressure on microphone diaphragm produces positive voltage on pin 2 relative to pin 3 of preamplifier output connector.
Recommended Operating Voltage	5 V (pin 2 to pins 3 and 4)	11 to 52 Vdc Phantom
Environmental Conditions	Operating temperatures: -7° C to 49° C (20° F to 120° F) Storage temperatures: -29° C to +74° C (-20° F to 165° F) Relative Humidity: 0 to 95%	
Net Weight	Microphone w/cable and mini-connector (TA4F): 65 g (2.3 oz.)	Microphone w/cable and preamplifier: 156 g (5.5 oz.)



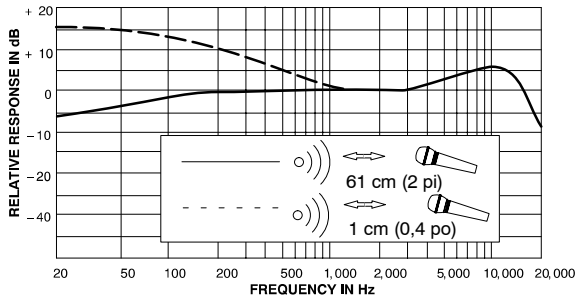
STANDARD TEST CIRCUIT

FIGURE 1



TYPICAL POLAR PATTERN

FIGURE 2



TYPICAL FREQUENCY RESPONSE

FIGURE 3

CERTIFICATION

The Beta 98H/C conforms to European EMC Directive 89/336/EEC, and is eligible to bear the CE marking. Meets applicable tests and performance criteria in European standard EN 55103 (1996), parts 1 and 2, for residential (E1) and light industrial (E2) environments.

The WB98H/C conforms to European EMC Directive 89/33/EEC, and is eligible to bear the CE marking. Meets Requirements of EMC Standard EN 301 489 Parts 1 and 9.

REPLACEMENT PARTS

Preamplifier Assembly	RPM440
Clamp and gooseneck assembly (less cartridge, windscreen), with 3 m (10 ft.) stripped and tinned cable	RPM540
Windscreen (4 per package)	RK183WS
Cardioid cartridge	RPM108
Supercardioid cartridge	RPM110
Cable Management Device	CMD-1
Battery Powered Supply	MX1-BP
Cable connector (for WB98H/C only)	WA330
Gooseneck Angle Brace	65A1963